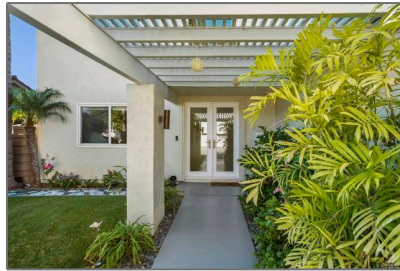


# Residential For Sale

2,160 Sqft - 2252 Soledad Rancho Road, Pacific Beach (San Diego), California, 92109



## Basic Details

Status:	Coming Soon
Listing Type:	For Sale
Property Type:	Residential
Property SubType:	Single Family Residence
Price:	\$2,480,000
Price Per Square Foot:	\$1,148
Square Footage:	2,160 Sqft
Lot Area:	0.19 Sqft
Year Built:	1970
View:	Mountain(s)
Bedrooms:	4
Bathrooms:	3
Bathrooms (Full):	2
Bathrooms (1/2):	1
Country:	US
State:	California
County:	San Diego
City:	Pacific Beach (San Diego)

## Features

✓ View:	City Lights, Ocean, Panoramic, Park/greenbelt, Coastline, Bay, Water
Association:	0
Senior Community:	0
✓ Common Walls:	No Common Walls
Stories:	2
✓ Community Features:	Sidewalks, Street Lights, Curbs
AttachedGarage :	1
✓ Parking:	6.00
Spa:	0
✓ Fireplace:	Living room
✓ Lot Features:	Back Yard, Front Yard, Cul-de-sac, Landscaped, Lawn
✓ Fence:	Partial
Entry Level:	1
✓ Laundry:	Dryer Included, Washer Included

Zipcode:	92109
Listing ID:	NDP2509587

✓	Room Type:	Living Room, Kitchen, All Bedrooms Up, Primary Suite, Primary Bathroom, Primary Bedroom
---	------------	---

✓	Entry Location
---	----------------

✓	Property Condition:	Turnkey
---	---------------------	---------

Main Level Bathrooms:	1
-----------------------	---

✓	Cooling System:	Central Air
---	-----------------	-------------

✓	Sewer:	Public Sewer
---	--------	--------------

MLS [Addon](#)

Zoning:	R-1
Parcel Number:	4177303300
Lot Size Square Feet:	8,100 Sqft

✓	Exclusions:	Entry Light Fixture And Light Fixture In Dining Room.
---	-------------	---

TaxAnnualAmount:	\$0
Garage Spaces:	3
High School:	Arlington
High School 2:	Arling
Middle Or Junior School:	Miller
High School District:	San Diego Unified
Levels:	Two
Lease Term :	12 Months
Taxes:	\$0
Guest House SqFt:	0 Sqft
Approx Lot SqFt:	0 Sqft
<div>✓</div> Special Listing Conditions:	Standard



Rina Maya  
☎ 858-876-7946  
☎ 800-878-0907  
✉ [Questions@unitedbrokersinc.net](mailto:Questions@unitedbrokersinc.net)