

Manufactured In Park For Sale

1,536 Sqft - 3300 15th Street, Rosamond, California, 93560



Basic Details

Status: **Active**

Listing Type: **For Sale**

Property Type: **Manufactured In Park**

Price: **\$69,900**

Price Per Square Foot: **\$46**

Square Footage: **1,536 Sqft**

Year Built: **1979**

View: **Mountain(s)**

Bedrooms: **3**

Bathrooms: **2**

Bathrooms (Full): **2**

Country: **US**

State: **California**

County: **Kern**

City: **Rosamond**

Zipcode: **93560**

Listing ID: **DW25188817**

Features

✓ View: **Desert**

Association: **1**

Senior Community: **0**

✓ Common Walls: **No Common Walls**

Stories: **1**

✓ Community Features: **Street Lights**

✓ Pool: **In ground, Community**

✓ Parking: **0.00**

✓ Parking: **Paved, Carport**

Spa: **0**

✓ Lot Features: **0-1 Unit/acre**

✓ Fence: **Wood**

✓ Security: **Fire and smoke detection system, Carbon monoxide detector(s)**

✓ Electric: **Standard**

Entry Level: **1**

✓ Laundry: **Inside**

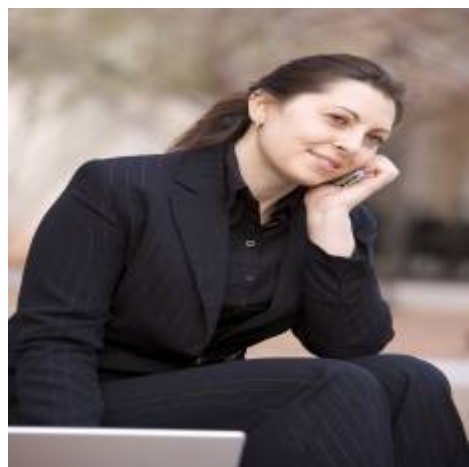
✓	Room Type:	All Bedrooms Down
✓	Roofing:	Composition
✓	Flooring:	Vinyl
✓	Window Features:	Double Pane Windows
✓	Entry Location:	Living Room
✓	Property Condition:	Fixer
✓	Foundation Details:	Pillar/post/pier
✓	Interior Features:	Pantry, Formica Counters
✓	Heating System:	electric, Baseboard
✓	Cooling System:	Evaporative Cooling
✓	Utilities:	Sewer Connected, Water Connected, Natural Gas Connected
✓	Water Source:	Public
✓	Sewer:	Public Sewer
✓	Appliances:	Built-in Range, Gas Cooktop, Water Heater

MLS [Addon](#)

Zoning:	ESF
Parcel Number:	25168139009
TaxAnnualAmount:	\$0
✓ RoomKitchenFeatures:	Formica Counters
✓ RoomBathroomFeatures:	Shower In Tub
High School:	Arlington
High School 2:	Arling
Middle Or Junior School:	Miller
High School District:	Kern Union

Levels:	One
Taxes:	\$0
Guest House SqFt:	0 Sqft
Approx Lot SqFt:	0 Sqft
<div>✓</div> Special Listing Conditions:	Standard

Agent [Info](#)



Rina Maya
☎ 858-876-7946
☎ 800-878-0907
✉ Questions@unitedbrokersinc.net

-
