

Residential For Sale

1,814 Sqft - 230 Vista Royale Circle, Palm Desert, California, 92211



Basic Details

Status:	Active
Listing Type:	For Sale
Property Type:	Residential
Property SubType:	Condominium
Price:	\$550,000
Price Per Square Foot:	\$303
Square Footage:	1,814 Sqft
Lot Area:	0.05 Sqft
Year Built:	1989
View:	Mountain(s)
Bedrooms:	3
Bathrooms:	3
Bathrooms (Full):	2
Bathrooms (1/2):	1
Country:	US
State:	California
County:	Riverside
City:	Palm Desert
Zipcode:	92211

Features

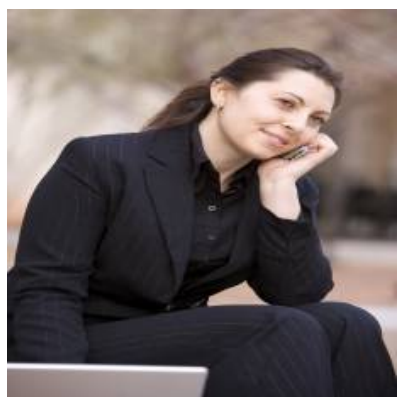
✓ View:	Park/greenbelt, Pool
Association:	1
Senior Community:	0
✓ Common Walls:	1 Common Wall
Stories:	1
✓ Pool:	Community
✓ Amenities:	Pool, Spa/hot Tub, Tennis Court(s), Clubhouse, Golf Course, Lake Or Pond
✓ Parking:	2.00
✓ Parking:	Garage - Two Door
Spa:	1
✓ Fireplace:	Living room
✓ Security:	Gated with guard, 24 hour security
Entry Level:	1
✓ Laundry:	Washer Included
✓ Flooring:	Carpet, Tile
✓ Spa Construction:	Community

Listing ID:	25597067PS	✓ Interior Features:	Ceiling Fan(s)
		✓ Heating System:	Central
		✓ Cooling System:	Central Air
		✓ Appliances:	Dishwasher, Microwave, Refrigerator

MLS [Addon](#)

Association Fee Frequency:	Monthly
Parcel Number:	626342065
Lot Size Square Feet:	2,000 Sqft
TaxAnnualAmount:	\$0
Association Fee:	\$849
High School:	Arlington
High School 2:	Arling
Middle Or Junior School:	Miller
Levels:	One
Taxes:	\$0
Guest House SqFt:	0 Sqft
Approx Lot SqFt:	0 Sqft
✓ Special Listing Conditions:	Standard

Agent [Info](#)



Rina Maya
☎ 858-876-7946
☎ 800-878-0907
✉ Questions@unitedbrokersinc.net

