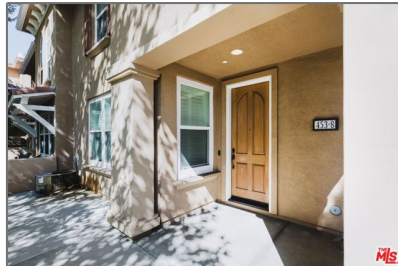


# Residential For Sale

1,438 Sqft - 453 Altadena Drive, Pasadena,  
California, 91107



## Basic Details

Status:	Active
Listing Type:	For Sale
Property Type:	Residential
Property SubType:	Condominium
Price:	\$880,000
Price Per Square Foot:	\$612
Square Footage:	1,438 Sqft
Lot Area:	0.88 Sqft
Year Built:	2005
View:	Mountain(s)
Bedrooms:	3
Bathrooms:	3
Bathrooms (Full):	2
Bathrooms (1/2):	1
Country:	US
State:	California
County:	Los Angeles
City:	Pasadena
Zipcode:	91107

## Features

Association:	1
Senior Community:	0
✓ Common Walls:	1 Common Wall
Stories:	0
✓ Amenities:	Trash
AttachedGarage :	1
✓ Parking:	2.00
Spa:	0
✓ Fireplace:	Family room
✓ Patio:	Patio Open
✓ Inclusions	
Entry Level:	1
✓ Laundry:	Dryer Included, Washer Included
✓ Room Type:	Living Room
✓ Flooring:	Wood, Carpet
✓ Window Features:	Plantation Shutters
✓ Entry Location:	Ground Level - No Steps

Listing ID:	25599859	✓ Interior Features:	Recessed Lighting, Ceiling Fan(s), Storage
		✓ Heating System:	Central
		✓ Cooling System:	Central Air
		✓ Appliances:	Dishwasher, Microwave, Refrigerator, Range, Oven

MLS Addon

Association Fee Frequency:	Monthly
Zoning:	PSR*
Parcel Number:	5744024042
Lot Size Square Feet:	38,228 Sqft
TaxAnnualAmount:	\$0
TaxYear:	0
Association Fee:	\$475
✓ RoomKitchenFeatures:	Granite Counters
✓ RoomBathroomFeatures:	Shower, Shower In Tub
High School:	Arlington
High School 2:	Arling
Middle Or Junior School:	Miller
Levels:	Two
✓ EatingArea:	Dining Room, Breakfast Counter / Bar
Taxes:	\$0
Guest House SqFt:	0 Sqft
Approx Lot SqFt:	0 Sqft
✓ Special Listing Conditions:	Standard



Rina Maya  
☎ 858-876-7946  
☎ 800-878-0907  
✉ [Questions@unitedbrokersinc.net](mailto:Questions@unitedbrokersinc.net)