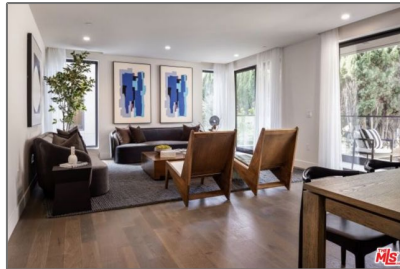


# Residential For Sale

1,832 Sqft - 411 HamelRoad, Los Angeles,  
California, 90048



## Basic Details

Status:	Active
Listing Type:	For Sale
Property Type:	Residential
Property SubType:	Condominium
Price:	\$1,710,000
Price Per Square Foot:	\$933
Square Footage:	1,832 Sqft
Year Built:	2022
View:	Mountain(s)
Bedrooms:	2
Bathrooms:	3
Bathrooms (Full):	2
Bathrooms (1/2):	1
Country:	US
State:	California
County:	Los Angeles
City:	Los Angeles
Zipcode:	90048
Listing ID:	25601285

## Features

Association:	1
Senior Community:	0
✓ Common Walls:	1 Common Wall
Stories:	4
✓ Amenities:	Maintenance Grounds, Pet Rules, Controlled Access, Concierge
✓ Parking:	2.00
✓ Parking:	Guest, Covered, Assigned, Community Structure, Side By Side
Spa:	0
✓ Security:	Automatic gate, Fire and smoke detection system, Gated community, Card/code access, Smoke Detector(s), Fire Sprinkler System
Entry Level:	2
✓ Room Type:	Living Room, Walk-in Closet, Entry
✓ Interior Features:	Open Floorplan, Recessed Lighting, Elevator
✓ Heating System:	Central

✓	Cooling System:	Central Air
✓	Appliances:	Dishwasher, Disposal, Microwave, Refrigerator, Vented Exhaust Fan, Range, Electric Cooktop

## MLS Addon

Association Fee Frequency:	Monthly
Parcel Number:	UNAVAILABLE
TaxAnnualAmount:	\$0
TaxYear:	0
Association Fee:	\$812
✓ RoomBathroomFeatures:	Shower In Tub
High School:	Arlington
High School 2:	Arling
Middle Or Junior School:	Miller
Levels:	One
✓ EatingArea:	Dining Room
Taxes:	\$0
Guest House SqFt:	0 Sqft
Approx Lot SqFt:	0 Sqft
✓ Special Listing Conditions:	Standard

## Agent Info



Rina Maya  
 📞 858-876-7946  
 📞 800-878-0907  
 ✉ Questions@unitedbrokersinc.net

