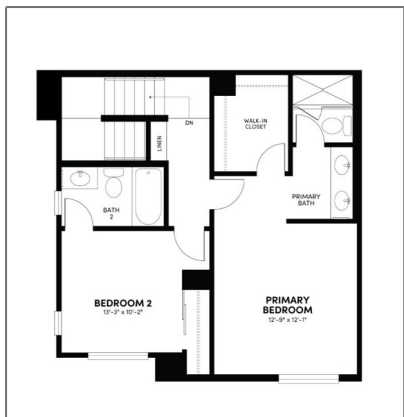
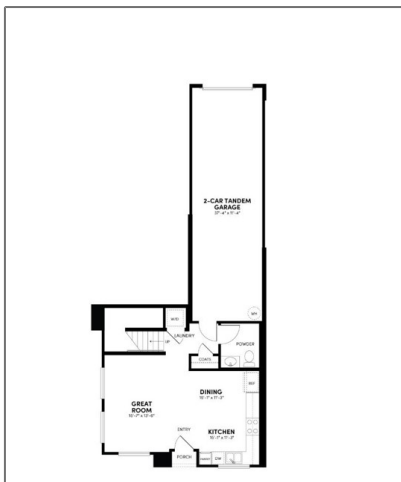


Residential For Sale

1,154 Sqft - 4153 S. LIMECREST PASEO, Ontario,
California, 91761



Basic Details

Status:	Active
Listing Type:	For Sale
Property Type:	Residential
Property SubType:	Condominium
Price:	\$534,408
Price Per Square Foot:	\$463
Square Footage:	1,154 Sqft
Year Built:	2025
View:	Mountain(s)
Bedrooms:	2
Bathrooms:	3
Bathrooms (Full):	2
Bathrooms (1/2):	1
Country:	US
State:	California

Features

Association:	1
Senior Community:	0
✓ Common Walls:	2+ Common Walls
Stories:	2
✓ Community Features:	Sidewalks, Street Lights, Suburban, Park, Curbs, Dog Park, Storm Drains
✓ Pool:	Community
✓ Amenities:	Pool, Spa/hot Tub, Clubhouse, Meeting Room, Management, Barbecue, Outdoor Cooking Area, Picnic Area, Playground, Sport Court, Pets Permitted, Banquet Facilities, Recreation Room, Pet Rules, Other Courts, Dog Park, Pickleball
AttachedGarage :	1
✓ Parking:	2.00
✓ Lot Features:	21-25 Units/acre

County:	San Bernardino
City:	Ontario
Zipcode:	91761
Listing ID:	OC25231855

Entry Level:	1
✓ Laundry:	Inside, Gas & Electric Dryer Hookup
✓ Room Type:	Walk-in Closet, Kitchen, Laundry, All Bedrooms Up, Great Room, Walk-in Pantry, Primary Bathroom, Primary Bedroom
✓ Entry Location	

Main Level Bathrooms:	1
✓ Cooling System:	Electric, Gas, Whole house fan, High efficiency, Central Air, Energy Star Qualified Equipment
✓ Water Source:	Public
✓ Sewer:	Public Sewer

MLS [Addon](#)

Association Fee Frequency:	Monthly
TaxAnnualAmount:	\$0
TaxYear:	0
Association Fee:	\$375
Garage Spaces:	2
High School:	Arlington
High School 2:	Arling
Middle Or Junior School:	Miller
High School District:	Chaffey Joint Union High
Levels:	Two
Taxes:	\$0
Guest House SqFt:	0 Sqft

Approx Lot SqFt: **0 Sqft**

✓

Special Listing
Conditions:

Standard

Agent [Info](#)



Rina Maya
☎ 858-876-7946
☎ 800-878-0907
✉ Questions@unitedbrokersinc.net

-
