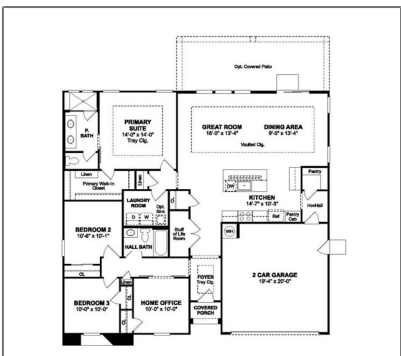


# Residential For Sale

1,760 Sqft - 39051 CalmviewCircle, Palmdale,  
California, 93551



## Basic Details

Status:	Active
Listing Type:	For Sale
Property Type:	Residential
Property SubType:	Single Family Residence
Price:	\$635,990
Price Per Square Foot:	\$361
Square Footage:	1,760 Sqft
Lot Area:	0.18 Sqft
Year Built:	2025
View:	Mountain(s)
Bedrooms:	3
Bathrooms:	2
Bathrooms (Full):	2
Country:	US
State:	California
County:	Los Angeles
City:	Palmdale

## Features

Association:	0
Senior Community:	0
✓ Common Walls:	No Common Walls
Stories:	1
✓ Community Features:	Suburban
AttachedGarage:	1
:	
✓ Parking:	2.00
✓ Parking:	Garage
Spa:	0
✓ Lot Features:	Sprinklers Drip System, Lot 6500-9999
✓ Patio:	Patio
Entry Level:	1
✓ Laundry:	Gas Dryer Hookup, Individual Room, Inside, Washer Hookup
✓ Room Type:	Office, Walk-in Closet, Kitchen, Great Room, Foyer, Primary Suite

Zipcode:	93551	✓	Roofing:	Tile
Listing ID:	SW25234187	✓	Flooring:	Carpet, Tile, Vinyl
		✓	Window Features:	Double Pane Windows
		✓	Entry Location:	Main Level
		✓	Interior Features:	Coffered Ceiling(s), High Ceilings, Open Floorplan, Pantry, Recessed Lighting, Cathedral Ceiling(s), Storage, Quartz Counters
			Main Level Bathrooms:	2
			Main Level Bedrooms:	3
		✓	Heating System:	Central
		✓	Cooling System:	Central Air
		✓	Utilities:	Sewer Connected, Water Connected, Electricity Connected, Cable Connected
		✓	Water Source:	Public
		✓	Sewer:	Public Sewer
		✓	Appliances:	Disposal, Gas Range, Microwave, Self Cleaning Oven, Free-standing Range

MLS [Addon](#)

Zoning:	Residential
Parcel Number:	3003104002
Lot Size Square Feet:	7,989
TaxAnnualAmount:	\$0
✓ RoomKitchenFeatures:	Kitchen Island, Quartz Counters, Kitchen Open To Family Room
✓ RoomBathroomFeatures:	Shower, Soaking Tub,

Walk-in Shower, Shower  
In Tub, Double Sinks In  
Bath(s), Quartz Counters,  
Double Sinks In Primary  
Bath

Garage Spaces: **2**

High School: **Arlington**

High School 2: **Arling**

Middle Or Junior  
School: **Miller**

High School  
District: **Antelope Valley  
Union**

Levels: **One**

✓ EatingArea: **Area, Breakfast Counter /  
Bar**

Taxes: **\$0**

Guest House  
SqFt: **0**

Approx Lot SqFt: **0**

✓ Special Listing  
Conditions: **Standard**

## Agent [Info](#)



Rina Maya

☎ 858-876-7946

☎ 800-878-0907

✉ [Questions@unitedbrokersinc.net](mailto:Questions@unitedbrokersinc.net)