

# Residential For Sale

2,386 Sqft - 228 Prague Drive, San Jose,  
California, 95119



## Basic [Details](#)

Status:	<b>Active</b>
Listing Type:	<b>For Sale</b>
Property Type:	<b>Residential</b>
Property SubType:	<b>Single Family Residence</b>
Price:	<b>\$1,798,000</b>
Price Per Square Foot:	<b>\$754</b>
Square Footage:	<b>2,386 Sqft</b>
Lot Area:	<b>0.14 Sqft</b>
Year Built:	<b>1974</b>
View:	<b>Mountain(s)</b>
Bedrooms:	<b>5</b>
Bathrooms:	<b>4</b>
Bathrooms (Full):	<b>3</b>
Bathrooms (1/2):	<b>1</b>
Country:	<b>US</b>
State:	<b>California</b>
County:	<b>Santa Clara</b>
City:	<b>San Jose</b>
Zipcode:	<b>95119</b>

## Features

Association:	<b>0</b>
AttachedGarage :	<b>1</b>
✓ Parking:	<b>3.00</b>
✓ Parking:	<b>Garage Door Opener, Garage</b>
✓ Lot Features:	<b>Back Yard</b>
✓ Laundry:	<b>Dryer Included, Washer Included</b>
✓ Roofing:	<b>Metal</b>
✓ Flooring:	<b>Tile, Laminate</b>
✓ Heating System:	<b>Forced air</b>
✓ Cooling System:	<b>Central Air</b>
✓ Sewer:	<b>Public Sewer</b>

Listing ID:

41114194

MLS [Addon](#)

Parcel Number:

70431064

Lot Size Square Feet:

6,000 Sqft

TaxAnnualAmount:

\$0

✓

RoomKitchenFeatures:

Butler's Pantry

Garage Spaces:

3

High School:

Arlington

High School 2:

Arling

Middle Or Junior School:

Miller

High School District:

East Side Union

Levels:

Two

Taxes:

\$0

Guest House SqFt:

0 Sqft

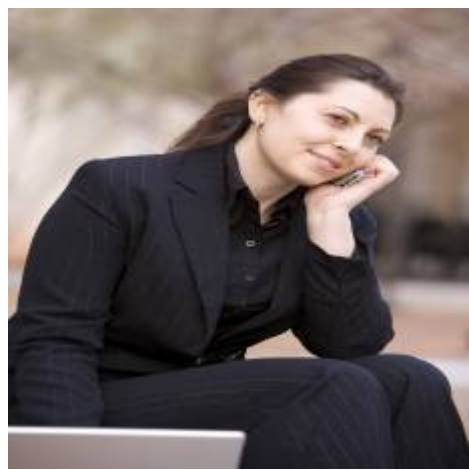
Approx Lot SqFt:

0 Sqft

Virtual Tour URL Unbranded:

[Click Here](#)

Agent [Info](#)



Rina Maya

📞

858-876-7946

📞

800-878-0907

✉

[Questions@unitedbrokersinc.net](mailto:Questions@unitedbrokersinc.net)

---