

Manufactured In Park For Sale

- 337 W Route 66, Glendora, California, 91740



Basic Details

Status:	Active
Listing Type:	For Sale
Property Type:	Manufactured In Park
Price:	\$129,000
Year Built:	1984
View:	Mountain(s)
Bedrooms:	1
Bathrooms:	1
Bathrooms (Full):	1
Country:	US
State:	California
County:	Los Angeles
City:	Glendora
Zipcode:	91740
Listing ID:	CV25196096

MLS Addon

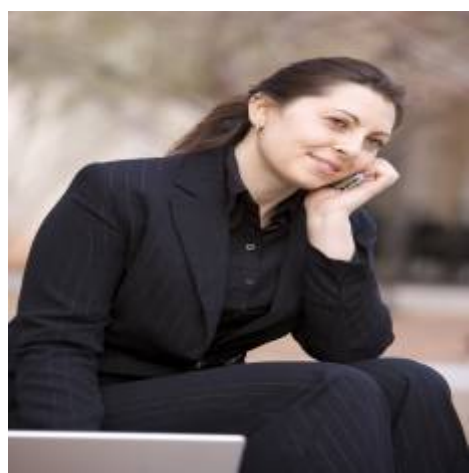
Parcel Number:	8639020017
TaxAnnualAmount:	\$0

Features

Association:	0
Senior Community:	1
Stories:	1
✓ Pet Policy:	Breed restrictions
✓ Community Features:	Street Lights
✓ Pool:	Community
✓ Parking:	0.00
✓ Lot Features:	Corner Lot
✓ Laundry:	Inside
✓ Entry Location:	Street
✓ Water Source:	Public
✓ Sewer:	Public Sewer

High School:	Arlington
High School 2:	Arling
Middle Or Junior School:	Miller
High School District:	Glendora Unified
Taxes:	\$0
Guest House SqFt:	0
Approx Lot SqFt:	0
<input checked="" type="checkbox"/> Special Listing Conditions:	Standard

Agent [Info](#)



Rina Maya
 858-876-7946
 800-878-0907
 Questions@unitedbrokersinc.net

-