

# Residential Rent For Rent

775 Sqft - 1482 Sherbourne, Los Angeles,  
California, 90035



## Basic Details

Status:	Active
Listing Type:	For Rent
Property Type:	Residential Rent
Property SubType:	Apartment
Price:	\$3,095
Price Per Square Foot:	\$4
Square Footage:	775 Sqft
Lot Area:	0.20 Sqft
Year Built:	2019
View:	Mountain(s)
Bedrooms:	1
Bathrooms:	1
Bathrooms (Full):	1
Country:	US
State:	California
County:	Los Angeles
City:	Los Angeles
Zipcode:	90035
Listing ID:	SR25238778

## Features

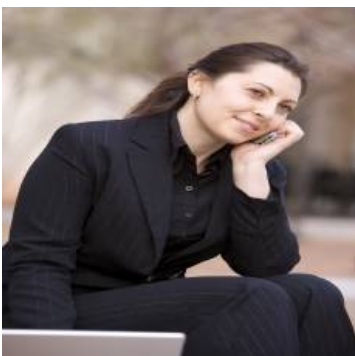
Association:	0
Senior Community:	0
✓ Common Walls:	1 Common Wall
Stories:	4
✓ Pet Policy:	Call, Cats ok, Dogs ok, Number limit
✓ Community Features:	Curbs
AttachedGarage :	1
✓ Parking	
✓ Lot Features:	6-10 Units/acre
✓ Furnished:	Unfurnished
Entry Level:	1
✓ Laundry:	Washer Hookup, Dryer Included
✓ Room Type:	All Bedrooms Up
✓ Entry Location:	Front
Main Level Bathrooms:	1
Main Level Bedrooms:	1

✓	Heating System:	Central
✓	Cooling System:	Central Air
✓	Water Source:	Public
✓	Sewer:	Public Sewer

## MLS [Addon](#)

Parcel Number:	<b>4303019024</b>
Lot Size Square Feet:	<b>8,526 Sqft</b>
TaxAnnualAmount:	<b>\$0</b>
Garage Spaces:	<b>1</b>
High School:	<b>Arlington</b>
High School 2:	<b>Arling</b>
Middle Or Junior School:	<b>Miller</b>
High School District:	<b>Los Angeles Unified</b>
Levels:	<b>One</b>
Lease Term :	<b>12 Months</b>
Taxes:	<b>\$0</b>
Guest House SqFt:	<b>0 Sqft</b>
Approx Lot SqFt:	<b>0 Sqft</b>
✓ Special Listing Conditions:	<b>Standard</b>

## Agent [Info](#)



Rina Maya  
 ☎ 858-876-7946  
 ☎ 800-878-0907  
 ✉ [Questions@unitedbrokersinc.net](mailto:Questions@unitedbrokersinc.net)

