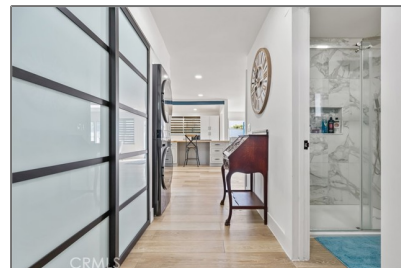


# Manufactured In Park For Sale

2,050 Sqft - 2275 25th, San Pedro, California, 90732



## Basic Details

Status: **Active**

Listing Type: **For Sale**

Property Type: **Manufactured In Park**

Price: **\$725,000**

Price Per Square Foot: **\$354**

Square Footage: **2,050 Sqft**

Year Built: **1977**

View: **Mountain(s)**

Bedrooms: **3**

Bathrooms: **2**

Bathrooms (Full): **1**

Bathrooms (3/4): **1**

Country: **US**

State: **California**

County: **Los Angeles**

City: **San Pedro**

Zipcode: **90732**

Listing ID: **SB25244079**

## Features

Association: **0**

Senior Community: **1**

Stories: **1**

✓ Community Features: **Street Lights, Golf, Preserve/public Land, Dog Park, Storm Drains**

✓ Pool: **Community**

✓ Amenities: **Pool, Spa/hot Tub, Tennis Court(s), Clubhouse, Meeting Room, Management, Guard, Barbecue, Outdoor Cooking Area, Call For Rules, Gym/ex Room, Cable Tv, Maintenance Grounds, Sauna, Banquet Facilities, Recreation Room, Pet Rules, Controlled Access, Golf Course, Hiking Trails, Security, Common Rv Parking, Gas, Dog Park, Electricity, Utilities, Pickleball**

✓ Parking: **0.00**

✓ Parking: **Attached Carport, Covered, Carport**

✓ Lot Features: **Corner Lot**

✓	Electric:	Electricity - On Property
✓	Inclusions:	Washer & Dryer, Refridgerator, Golf Cart
Entry Level: <b>1</b>		
✓	Laundry:	In Closet
✓	Room Type:	Living Room, Office, Walk-in Closet, Kitchen, Main Floor Bedroom, See Remarks, Main Floor Primary Bedroom, Primary Suite
✓	Window Features:	Skylight(s)
✓	Entry Location:	Front Door
✓	Property Condition:	Updated/remodeled
✓	Heating System:	Forced air
✓	Utilities:	Sewer Connected, Water Connected, Cable Available, Electricity Connected, Natural Gas Connected
✓	Water Source:	Public
✓	Sewer:	Public Sewer
✓	Appliances:	Dishwasher

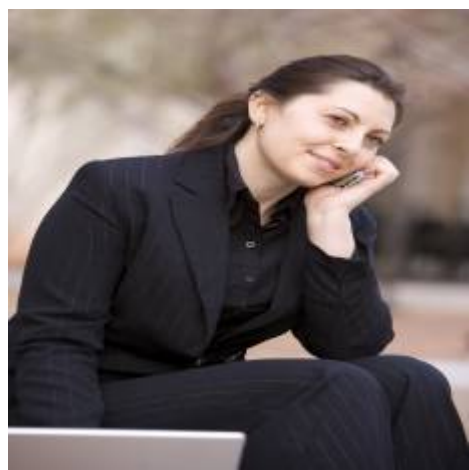
## MLS Addon

Parcel Number:	<b>7563006018</b>
TaxAnnualAmount:	<b>\$0</b>
✓ RoomBathroomFeatures:	Shower, Bathtub, Separate Tub And Shower, Linen Closet/storage, Vanity Area, Privacy Toilet Door, Quartz Counters, Main Floor Full Bath, Double Sinks In Primary Bath
High School:	<b>Arlington</b>
High School 2:	<b>Arling</b>

Middle Or Junior School:	Miller
High School District:	Los Angeles Unified
Levels:	One
Taxes:	\$0
Guest House SqFt:	0
Approx Lot SqFt:	0
<div><div>✓</div>Special Listing Conditions:</div>	<div>Standard</div>
Virtual Tour URL Unbranded:	<a href="#">Click Here</a>

Agent [Info](#)

---



Rina Maya  
☎ 858-876-7946  
☎ 800-878-0907  
✉ [Questions@unitedbrokersinc.net](mailto:Questions@unitedbrokersinc.net)

---