

Manufactured In Park For Sale

- 4556 Appian Way, El Sobrante, California, 94803



Basic [Details](#)

Status: **Active**

Listing Type: **For Sale**

Property Type: **Manufactured In Park**

Price: **\$84,000**

Price Per Square Foot: **\$125**

Lot Area: **0.02 Sqft**

View: **Mountain(s)**

Bedrooms: **2**

Bathrooms: **1**

Bathrooms (Full): **1**

Country: **US**

State: **California**

County: **Contra Costa**

City: **El Sobrante**

Zipcode: **94803**

Listing ID: **41118690**

Features

✓ Common Walls: [No Common Walls](#)

✓ Pet Policy: [Call](#)

✓ Parking: [0.00](#)

✓ Parking: [Carport](#)

✓ Patio: [Front Porch](#)

✓ Room Type: [Sun](#)

✓ Flooring: [Laminate](#)

Main Level Bathrooms: **1**

Main Level Bedrooms: **1**

✓ Cooling System: [See remarks](#)

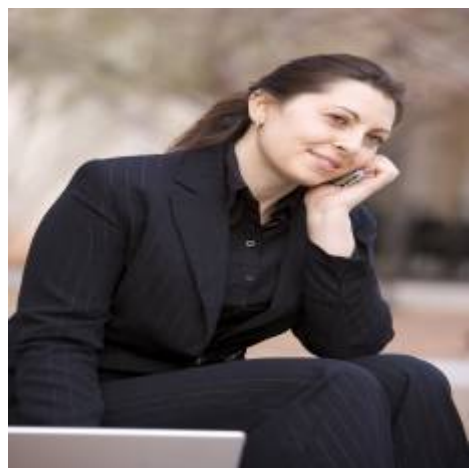
✓ Water Source: [Private](#)

✓ Sewer: [Private Sewer](#)

MLS [Addon](#)

Parcel Number:	7425220071
Lot Size Square Feet:	672 Sqft
TaxAnnualAmount:	\$0
High School:	Arlington
High School 2:	Arling
Middle Or Junior School:	Miller
Taxes:	\$0
Guest House SqFt:	0 Sqft
Approx Lot SqFt:	0 Sqft

Agent [Info](#)



Rina Maya
☎ 858-876-7946
☎ 800-878-0907
✉ Questions@unitedbrokersinc.net

-