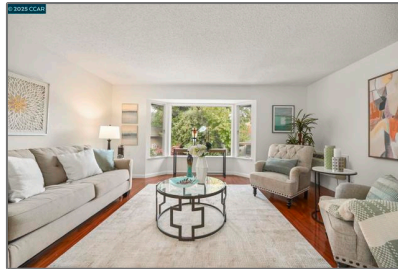


# Residential For Sale

760 Sqft - 3465 Tice Creek Dr, Walnut Creek,  
California, 94595



## Basic [Details](#)

Status:	<b>Active</b>
Listing Type:	<b>For Sale</b>
Property Type:	<b>Residential</b>
Property SubType:	<b>Condominium</b>
Price:	<b>\$229,000</b>
Price Per Square Foot:	<b>\$301</b>
Square Footage:	<b>760 Sqft</b>
Year Built:	<b>1969</b>
View:	<b>Mountain(s)</b>
Bedrooms:	<b>1</b>
Bathrooms:	<b>1</b>
Bathrooms (Full):	<b>1</b>
Country:	<b>US</b>
State:	<b>California</b>
County:	<b>Contra Costa</b>
City:	<b>Walnut Creek</b>
Zipcode:	<b>94595</b>
Listing ID:	<b>41118233</b>

## Features

✓	View:	<a href="#">Trees/woods</a>
Association:		
		<b>1</b>
✓	Amenities:	<a href="#">Tennis Court(s), Trash, Security, Water</a>
AttachedGarage :		
		<b>0</b>
✓	Parking	
✓	Parking:	<a href="#">Guest, Carport</a>
✓	Flooring:	<a href="#">Carpet, See Remarks</a>
✓	Heating System:	<a href="#">See remarks, Radiant</a>
✓	Cooling System:	<a href="#">Wall/window Unit(s)</a>
✓	Sewer:	<a href="#">Public Sewer</a>

MLS [Addon](#)

Association Fee Frequency:	Monthly
Parcel Number:	900 017 071
TaxAnnualAmount:	\$0
Association Fee:	\$1,258
<input checked="" type="checkbox"/> RoomKitchenFeatures:	Stone Counters
High School:	Arlington
High School 2:	Arling
Middle Or Junior School:	Miller
Levels:	One
Taxes:	\$0
Guest House SqFt:	0
Approx Lot SqFt:	0
Virtual Tour URL Unbranded:	<a href="#">Click Here</a>

Agent [Info](#)



Rina Maya  
 858-876-7946  
 800-878-0907  
 [Questions@unitedbrokersinc.net](mailto:Questions@unitedbrokersinc.net)