

Residential Rent For Rent

2,068 Sqft - 47128 El MenaraCircle, Palm Desert,
California, 92260



Basic Details

Status:	Active
Listing Type:	For Rent
Property Type:	Residential Rent
Property SubType:	Single Family Residence
Price:	\$7,500
Price Per Square Foot:	\$4
Square Footage:	2,068 Sqft
Lot Area:	0.09 Sqft
Year Built:	1972
View:	Mountain(s)
Bedrooms:	2
Bathrooms:	2
Bathrooms (Full):	1
Bathrooms (3/4):	1
State:	California
County:	Riverside
City:	Palm Desert
Zipcode:	92260

Features

✓ View:	Mountain(s), Golf Course
Association:	1
Senior Community:	0
Stories:	1
✓ Pet Policy:	No, Yes
✓ Community Features:	Golf
✓ Pool:	In ground, Electric Heat
✓ Amenities:	Tennis Court(s), Clubhouse, Management, Picnic Area, Bocce Ball Court, Gym/ex Room, Card Room, Maintenance Grounds, Controlled Access, Golf Course, Paddle Tennis, Lake Or Pond
AttachedGarage :	1
✓ Parking:	4.00
✓ Parking:	Direct Garage Access, Guest
Spa:	1
✓ Lot Features:	Landscaped, Sprinklers

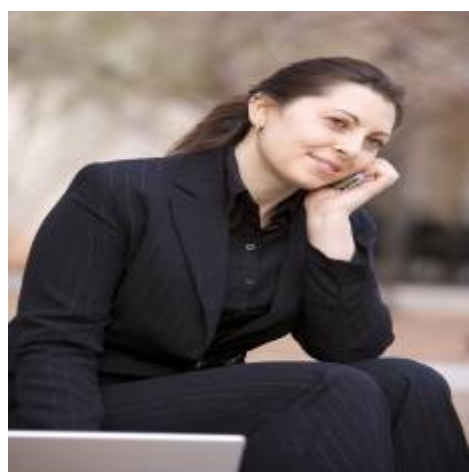
Listing ID:	219015795DA	Timer, On Golf Course
✓	Fence:	Block
✓	Security:	Fire and smoke detection system, Gated community, 24 hour security
✓	Patio:	Covered, Concrete
✓	Laundry:	Individual Room
✓	Room Type:	Formal Entry, Living Room, Bonus Room, Atrium, Guest/maid's Quarters
✓	Roofing:	Flat
✓	Flooring:	Carpet, Tile
✓	Window Features:	Blinds, Shutters
✓	Spa Construction:	Community, In Ground
✓	Property Condition:	Updated/remodeled
✓	Foundation Details:	Slab
✓	Interior Features:	High Ceilings, Open Floorplan, Recessed Lighting
✓	Heating System:	Forced air, natural gas
✓	Cooling System:	Central Air
✓	Appliances:	Dishwasher, Disposal, Electric Oven, Microwave, Refrigerator, Gas Cooktop

MLS [Addon](#)

Association Fee Frequency:	Monthly
Parcel Number:	630292003
Lot Size Square Feet:	3,920 Sqft
TaxAnnualAmount:	\$0

Association Fee 2:	\$522
Association Fee:	\$728
Association Fee 2 Frequency:	Monthly
<div> <div>✓</div> <div>RoomKitchenFeatures:</div> </div> <div>Granite Counters, Remodeled Kitchen</div>	
<div> <div>✓</div> <div>RoomBathroomFeatures:</div> </div> <div>Shower, Separate Tub And Shower, Remodeled, Tile Counters</div>	
Garage Spaces:	2
High School:	Arlington
High School 2:	Arling
Middle Or Junior School:	Miller
Levels:	One
<div> <div>✓</div> <div>EatingArea:</div> </div> <div>Dining Room, Breakfast Counter / Bar</div>	
Taxes:	\$0
Guest House SqFt:	0 Sqft
Approx Lot SqFt:	0 Sqft
<div> <div>✓</div> <div>Special Listing Conditions:</div> </div> <div>Standard</div>	

Agent [Info](#)



Rina Maya
📞 858-876-7946
📞 800-878-0907
✉ Questions@unitedbrokersinc.net
