

# Residential Rent For Rent

5,678 Sqft - 1441 HAYWORTH Avenue, Los Angeles, California, 90035



## Basic Details

Status:	Active
Listing Type:	For Rent
Property Type:	Residential Rent
Property SubType:	Condominium
Price:	\$4,000
Price Per Square Foot:	\$1
Square Footage:	5,678 Sqft
Lot Area:	0.16 Sqft
Year Built:	1961
View:	Mountain(s)
Bedrooms:	2
Bathrooms:	2
Bathrooms (Full):	2
State:	California
County:	Los Angeles

## Features

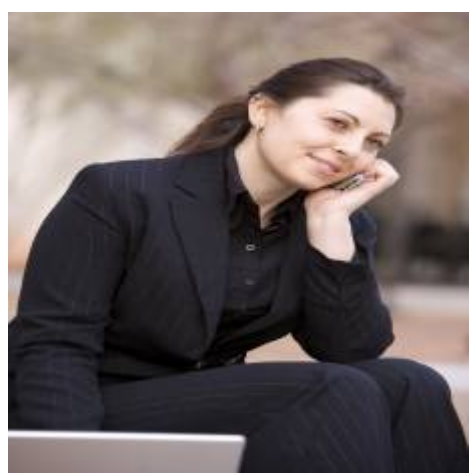
✓ View:	City Lights
Association:	0
Senior Community:	0
Stories:	2
✓ Pet Policy:	Call
✓ Parking:	2.00
✓ Parking:	Community Structure
✓ Furnished:	Furnished
✓ Laundry:	Community
✓ Room Type:	Living Room
✓ Flooring:	Wood
✓ Heating System:	Combination
✓ Cooling System:	Central Air
✓ Appliances:	Dishwasher, Microwave

City:	<b>Los Angeles</b>
Zipcode:	<b>90035</b>
Listing ID:	<b>19515462</b>

MLS [Addon](#)

Zoning:	<b>LAR3</b>
Parcel Number:	<b>5068017010</b>
Lot Size Square Feet:	<b>7,125 Sqft</b>
TaxAnnualAmount:	<b>\$0</b>
High School:	<b>Arlington</b>
High School 2:	<b>Arling</b>
Middle Or Junior School:	<b>Miller</b>
Lease Term :	<b>12 Months</b>
Taxes:	<b>\$0</b>
Guest House SqFt:	<b>0 Sqft</b>
Approx Lot SqFt:	<b>0 Sqft</b>

Agent [Info](#)



Rina Maya  
☎ 858-876-7946  
☎ 800-878-0907  
✉ [Questions@unitedbrokersinc.net](mailto:Questions@unitedbrokersinc.net)