

# Residential Rent For Rent

1,348 Sqft - 41120 WoodhavenDrive, Palm Desert,  
California, 92211



## Basic Details

Status:	Active
Listing Type:	For Rent
Property Type:	Residential Rent
Property SubType:	Condominium
Price:	\$3,450
Price Per Square Foot:	\$3
Square Footage:	1,348 Sqft
Lot Area:	0.05 Sqft
Year Built:	1984
View:	Mountain(s)
Bedrooms:	2
Bathrooms:	2
Bathrooms (Full):	2
State:	California
County:	Riverside

## Features

✓ View:	Golf Course
Association:	1
✓ Pool:	In ground, Gas Heat
✓ Amenities:	Common Rv Parking, Dues Paid Monthly
✓ Parking:	2.00
Spa:	1
✓ Fireplace:	Gas, Living room
✓ Security:	Gated with guard, 24 hour security
✓ Patio:	Rear Porch
✓ Laundry:	In Garage, Dryer Included, Washer Included
✓ Room Type:	Living Room, Atrium
✓ Flooring:	Carpet, Tile
✓ Spa Construction:	In Ground

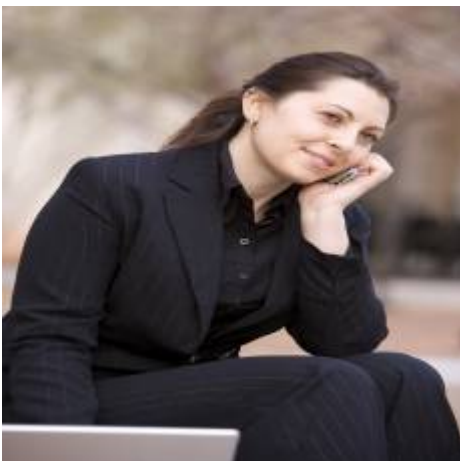
City:	<b>Palm Desert</b>
Zipcode:	<b>92211</b>
Listing ID:	<b>218006676DA</b>

✓	Property Condition:	Updated/remodeled
✓	Cooling System:	Central Air
✓	Utilities:	Cable Available
✓	Appliances:	Dishwasher, Disposal, Refrigerator, Freezer

## MLS [Addon](#)

Parcel Number:	<b>632101038</b>
Lot Size Square Feet:	<b>2,178 Sqft</b>
TaxAnnualAmount:	<b>\$0</b>
Association Fee:	<b>\$505</b>
Garage Spaces:	<b>2</b>
High School:	<b>Arlington</b>
High School 2:	<b>Arling</b>
Middle Or Junior School:	<b>Miller</b>
Levels:	<b>One</b>
Taxes:	<b>\$0</b>
Guest House SqFt:	<b>0 Sqft</b>
Approx Lot SqFt:	<b>0 Sqft</b>

## Agent [Info](#)



Rina Maya

☎ 858-876-7946

☎ 800-878-0907

✉ [Questions@unitedbrokersinc.net](mailto:Questions@unitedbrokersinc.net)

