

Residential Rent For Rent

2,000 Sqft - 31678 SeacoveDrive, Laguna Beach,
California, 92651



Basic Details

Status:	Active
Listing Type:	For Rent
Property Type:	Residential Rent
Property SubType:	Single Family Residence
Price:	\$25,000
Price Per Square Foot:	\$13
Square Footage:	2,000 Sqft
Lot Area:	0.23 Sqft
Year Built:	2009
View:	Mountain(s)
Bedrooms:	3
Bathrooms:	4
Bathrooms (Full):	2
Bathrooms (1/2):	1
Bathrooms (3/4):	1
Country:	US
State:	California
County:	Orange

Features

✓ View:	Ocean, Panoramic, Coastline, Catalina, Bluff, Water, White Water
Association:	1
Senior Community:	0
✓ Common Walls:	No Common Walls
Stories:	2
✓ Pet Policy:	Call, Breed restrictions, Size limit, Number limit
✓ Community Features:	Golf, Hiking, Watersports, Biking
AttachedGarage :	1
✓ Parking:	2.00
✓ Parking:	Direct Garage Access, Garage Faces Rear
Spa:	0
✓ Fireplace:	Gas, Living room
✓ Lot Features:	Back Yard, Cul-de-sac, Yard, Gentle Sloping, Garden, Bluff

City:	Laguna Beach
Zipcode:	92651
<div><div>✓</div>Water front Features:</div>	<div>Ocean Access, Ocean Side Of Highway 1, Ocean Side Of Freeway, Beach Access, Beach Front, Ocean Front</div>
Listing ID:	LG22040502

<div>✓</div> Fence:	<div>Wood</div>
<div>✓</div> Security:	<div>Carbon monoxide detector(s), Smoke Detector(s)</div>
<div>✓</div> Patio:	<div>Deck, Patio, Terrace</div>
<div>✓</div> Furnished:	<div>Furnished</div>
<div>✓</div> Laundry:	<div>Inside</div>
<div>✓</div> Room Type:	<div>Living Room, Main Floor Master Bedroom, All Bedrooms Up, Great Room, Master Suite, Main Floor Bedroom</div>
<div>✓</div> Flooring:	<div>Wood</div>
<div>✓</div> Property Condition:	<div>Turnkey, Updated/remodeled</div>
<div>✓</div> Interior Features:	<div>High Ceilings, Granite Counters, Beamed Ceilings, Furnished</div>

Main Level Bathrooms:	2
Main Level Bedrooms:	3
<div>✓</div> Heating System:	<div>Central, Fireplace(s)</div>
<div>✓</div> Utilities:	<div>Sewer Connected, Water Connected, Electricity Connected, Natural Gas Connected, Cable Connected</div>
<div>✓</div> Water Source:	<div>Public</div>
<div>✓</div> Sewer:	<div>Public Sewer</div>
<div>✓</div> Appliances:	<div>Dishwasher, Gas Range, Microwave, Refrigerator, Gas Oven</div>

MLS [Addon](#)

Parcel Number:	65810105
Lot Size Square Feet:	9,900 Sqft

TaxAnnualAmount: \$0

✓ RoomKitchenFeatures: Granite Counters, Kitchen Island, Remodeled Kitchen

✓ RoomBathroomFeatures: Remodeled, Upgraded, Stone Counters

Garage Spaces: 2

High School: Arlington

High School 2: Arling

Middle Or Junior School: Miller

High School District: Laguna Beach Unified

Levels: Two

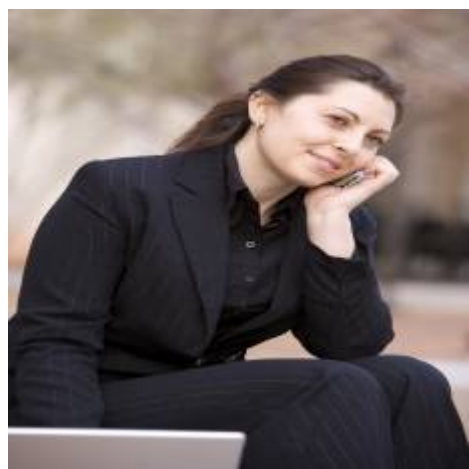
✓ EatingArea: Dining Room, Breakfast Counter / Bar, Breakfast Nook

Taxes: \$0

Guest House SqFt: 0 Sqft

Approx Lot SqFt: 0 Sqft

Agent [Info](#)



Rina Maya
☎ 858-876-7946
☎ 800-878-0907
✉ Questions@unitedbrokersinc.net