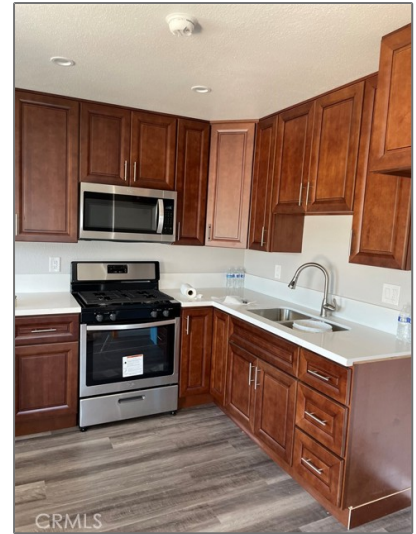


Residential Rent For Rent

810 Sqft - 25925 NarbonneAvenue, Lomita,
California, 90717



Basic Details

Status:	Active
Listing Type:	For Rent
Property Type:	Residential Rent
Property SubType:	Condominium
Price:	\$2,400
Price Per Square Foot:	\$3
Square Footage:	810 Sqft
Lot Area:	1.36 Sqft
Year Built:	1973
View:	Mountain(s)
Bedrooms:	2
Bathrooms:	1
Bathrooms (Full):	1
Country:	US
State:	California

Features

✓ View:	City Lights, Mountain(s)
Association:	1
Senior Community:	0
✓ Common Walls:	2+ Common Walls, End Unit
✓ Community Features:	Street Lights, Suburban, Hiking, Park
✓ Pool:	Association
✓ Amenities:	Pool, Maintenance Front Yard
AttachedGarage :	0
✓ Parking:	2.00
✓ Parking:	Assigned, Built-in Storage
✓ Fireplace:	Living room, Kitchen, Bath
✓ Security:	

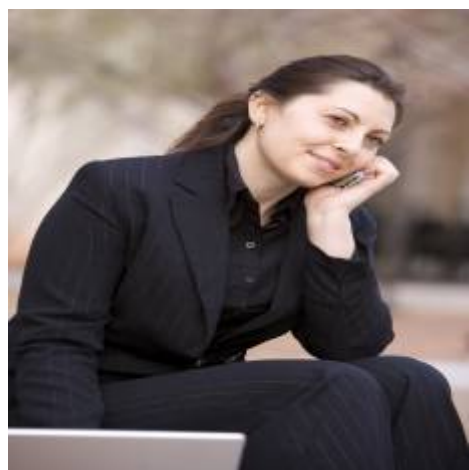
County:	Los Angeles				Gated community, Carbon monoxide detector(s), Smoke Detector(s)
City:	Lomita				
Zipcode:	90717	✓	Furnished:		Unfurnished
Listing ID:	SB22182124	✓	Laundry:		Common Area
		✓	Room Type:		Main Floor Bedroom
		✓	Roofing:		Flat
		✓	Property Condition:		Turnkey
		✓	Interior Features:		Crown Molding, Recessed Lighting, Ceiling Fan(s)
			Main Level Bathrooms:		1
			Main Level Bedrooms:		1
		✓	Heating System:		Wall Furnace
		✓	Utilities:		Sewer Connected, Water Connected
		✓	Water Source:		Public
		✓	Sewer:		Public Sewer
		✓	Appliances:		Microwave, Gas Oven, Energy Star Qualified Appliances

MLS [Addon](#)

Zoning:	LORVD1200*
Parcel Number:	7553003078
Lot Size Square Feet:	59,281 Sqft
TaxAnnualAmount:	\$0
✓ RoomKitchenFeatures:	Remodeled Kitchen
✓ RoomBathroomFeatures:	Shower, Bathtub, Main Floor Full Bath

Garage Spaces:	2
High School:	Narbonne
High School 2:	Narbon
Middle Or Junior School:	Flemming
Elementary School:	Eshelman
High School District:	Los Angeles Unified
Levels:	Two
<div>✓</div> EatingArea:	Area
Lease Term :	12 Months
Taxes:	\$0
Guest House SqFt:	0 Sqft
Approx Lot SqFt:	0 Sqft

Agent [Info](#)



Rina Maya
☎ 858-876-7946
☎ 800-878-0907
✉ Questions@unitedbrokersinc.net