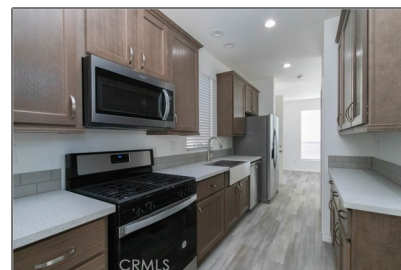


Manufactured In Park For Sale

504 Sqft - 16540 Whittier Blvd, Whittier, California, 90603



Basic Details

Status: **Active**

Listing Type: **For Sale**

Property Type: **Manufactured In Park**

Price: **\$139,900**

Price Per Square Foot: **\$278**

Square Footage: **504 Sqft**

Year Built: **2022**

View: **Mountain(s)**

Bedrooms: **1**

Bathrooms: **1**

Bathrooms (Full): **1**

Country: **US**

State: **California**

County: **Los Angeles**

City: **Whittier**

Zipcode: **90603**

Listing ID: **PW22239678**

Features

Association: **0**

Senior Community: **0**

✓ Pet Policy: [Call](#)

✓ Community Features: [Street Lights](#)

✓ Parking

✓ Parking: [Assigned](#)

Spa: **0**

✓ Lot Features: [No Landscaping](#)

✓ Security: [Carbon monoxide detector\(s\), Smoke Detector\(s\)](#)

✓ Laundry: [Gas Dryer Hookup, Inside, Washer Hookup, Stackable](#)

✓ Room Type: [Main Floor Bedroom](#)

✓ Roofing: [Composition](#)

✓ Flooring: [Vinyl](#)

✓ Window Features: [Double Pane Windows, Blinds](#)

✓ Foundation Details:

		Pier Jacks
✓	Interior Features:	High Ceilings, Open Floorplan, Corian Counters
✓	Utilities:	Sewer Connected, Cable Available, Electricity Connected, Natural Gas Connected
✓	Water Source:	Public
✓	Sewer:	Public Sewer
✓	Appliances:	Dishwasher, Disposal, Gas Range, Microwave, Refrigerator, Free-standing Range, Water Heater

MLS Addon

Tax Annual Amount: **\$0**

✓ Room Kitchen Features: **Corian Counters**

✓ Room Bathroom Features: **Shower, Walk-in Shower**

High School: **Arlington**

High School 2: **Arling**

Middle Or Junior School: **Miller**

High School District: **Whittier Union High**

Taxes: **\$0**

Guest House SqFt: **0 Sqft**

Approx Lot SqFt: **0 Sqft**

✓ Special Listing Conditions: **Standard**

Agent Info



Rina Maya

☎ 858-876-7946

☎ 800-878-0907

✉ Questions@unitedbrokersinc.net
