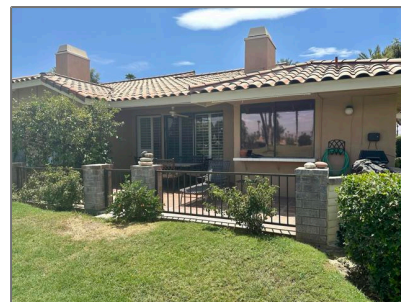


Residential Rent For Rent

1,584 Sqft - 352 Sierra Madre, Palm Desert,
California, 92260



Basic Details

Status:	Active
Listing Type:	For Rent
Property Type:	Residential Rent
Property SubType:	Condominium
Price:	\$5,800
Price Per Square Foot:	\$4
Square Footage:	1,584 Sqft
Lot Area:	0.06 Sqft
Year Built:	1979
View:	Mountain(s)
Bedrooms:	2
Bathrooms:	2
Bathrooms (Full):	1
Bathrooms (3/4):	1
Country:	US

Features

✓ View:	Mountain(s), Golf Course
Association:	1
Senior Community:	0
Stories:	1
✓ Pet Policy:	Call
✓ Community Features:	Golf
✓ Pool:	In ground, Community, Electric Heat
AttachedGarage :	1
✓ Parking:	3.00
✓ Parking:	Driveway, Garage Door Opener
Spa:	1
✓ Fireplace:	Living room
✓ Lot Features:	Sprinkler System, On

State:	California				Golf Course
County:	Riverside	✓	Security:		Gated community, 24 hour security
City:	Palm Desert	✓	Room Type:		Living Room, Den
Zipcode:	92260	✓	Flooring:		Carpet, Tile
Listing ID:	219087391DA	✓	Spa Construction:		Community, In Ground
		✓	Heating System:		Forced air
		✓	Appliances:		Dishwasher, Microwave, Refrigerator

MLS [Addon](#)

Association Fee Frequency:	Monthly
Parcel Number:	622074039
Lot Size Square Feet:	2,614 Sqft
TaxAnnualAmount:	\$0
Association Fee 2:	\$118
Association Fee:	\$610
Association Fee 2 Frequency:	Monthly
Garage Spaces:	1
High School:	Arlington
High School 2:	Arling
Middle Or Junior School:	Miller
Levels:	One
Taxes:	\$0
Guest House SqFt:	0 Sqft
Approx Lot SqFt:	0 Sqft



Rina Maya
☎ 858-876-7946
☎ 800-878-0907
✉ Questions@unitedbrokersinc.net