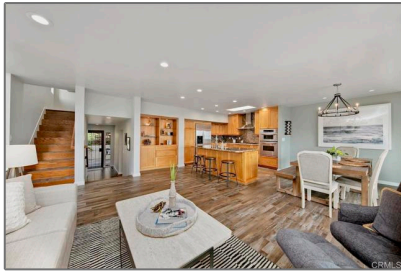


Residential Rent For Rent

1,655 Sqft - 2260 Del Mar Scenic Parkway, Del Mar, California, 92014



Basic Details

Status:	Active
Listing Type:	For Rent
Property Type:	Residential Rent
Property SubType:	Townhouse
Price:	\$7,500
Price Per Square Foot:	\$5
Square Footage:	1,655 Sqft
Year Built:	1975
View:	Mountain(s)
Bedrooms:	2
Bathrooms:	2
Bathrooms (Full):	2
State:	California
County:	San Diego
City:	Del Mar
Zipcode:	92014
Listing ID:	NDP2300088

Features

✓ View:	Ocean, Coastline
Association:	1
Senior Community:	0
✓ Common Walls:	1 Common Wall
Stories:	3
✓ Pet Policy:	Call
✓ Community Features:	Hiking, Park, Preserve/public Land, Dog Park, Biking
✓ Pool:	Community
AttachedGarage :	1
✓ Parking:	2.00
Spa:	0
✓ Fireplace:	Living room, Primary Retreat
✓ Lot Features:	0-1 Unit/acre
✓ Furnished:	Furnished
Entry Level:	1
✓ Laundry:	In Garage

✓	Room Type:	Family Room, Walk-in Closet, Kitchen, Laundry, Great Room, Main Floor Bedroom, Primary Suite, Primary Bathroom, Primary Bedroom
✓	Entry Location	
✓	Interior Features:	Granite Counters, Furnished

Main Level Bathrooms:	1
-----------------------	---

Main Level Bedrooms:	1
----------------------	---

MLS [Addon](#)

Zoning:	Condominium Unit
Parcel Number:	3012300960
TaxAnnualAmount:	\$0
Garage Spaces:	2
High School:	Arlington
High School 2:	Arling
Middle Or Junior School:	Miller
High School District:	San Dieguito Union
Levels:	Three Or More
Taxes:	\$0
Guest House SqFt:	0 Sqft
Approx Lot SqFt:	0 Sqft
✓ Special Listing Conditions:	Standard
Virtual Tour URL Unbranded:	Click Here

Agent [Info](#)



Rina Maya

☎ 858-876-7946

☎ 800-878-0907

✉ Questions@unitedbrokersinc.net
