

# Manufactured In Park For Sale

1,584 Sqft - 265 S Paseo Laredo, Cathedral City, California, 92234



## Basic Details

Status: **Active**

Listing Type: **For Sale**

Property Type: **Manufactured In Park**

Price: **\$155,000**

Price Per Square Foot: **\$98**

Square Footage: **1,584 Sqft**

Year Built: **1978**

View: **Mountain(s)**

Bedrooms: **2**

Bathrooms: **2**

Bathrooms (Full): **2**

Country: **US**

State: **California**

County: **Riverside**

City: **Cathedral City**

Zipcode: **92234**

Listing ID: **SW23096301**

## Features

Association: **0**

Senior Community: **1**

Stories: **1**

✓ Community Features: **Mountainous**

✓ Pool: **Community**

AttachedGarage: **0**

✓ Parking: **2.00**

✓ Lot Features: **On Golf Course**

✓ Inclusions: **Solar**

Entry Level: **1**

✓ Laundry: **Individual Room**

✓ Flooring: **Wood**

✓ Entry Location: **Ground Level W/ Steps**

✓ Heating System: **Central**

✓ Cooling System: **Central Air**

✓ Water Source: **Public**



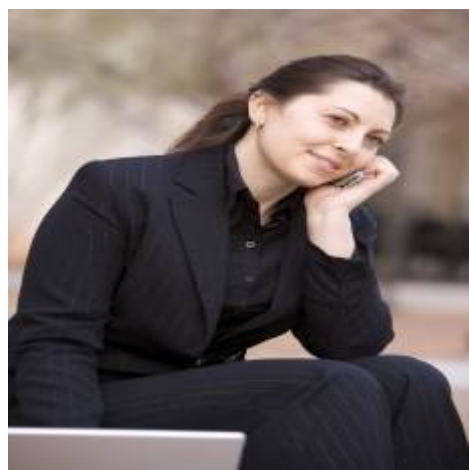
Sewer:

Public Sewer

MLS [Addon](#)

TaxAnnualAmount:	\$0
Garage Spaces:	2
High School:	Arlington
High School 2:	Arling
Middle Or Junior School:	Miller
High School District:	Palm Springs Unified
Levels:	One
Taxes:	\$0
Guest House SqFt:	0 Sqft
Approx Lot SqFt:	0 Sqft
<div><div>✓</div>Special Listing Conditions:</div>	<a href="#">Standard</a>

Agent [Info](#)



Rina Maya  
 858-876-7946  
 800-878-0907  
 [Questions@unitedbrokersinc.net](mailto:Questions@unitedbrokersinc.net)

-