

Residential For Sale

504 Sqft - 850 MapleLane, Sugar Loaf, California,
92386



Basic Details

Status:	Active
Listing Type:	For Sale
Property Type:	Residential
Property SubType:	Single Family Residence
Price:	\$299,000
Price Per Square Foot:	\$593
Square Footage:	504 Sqft
Lot Area:	0.11 Sqft
Year Built:	1956
View:	Mountain(s)
Bedrooms:	2
Bathrooms:	1
Bathrooms (Full):	1
Country:	US

Features

✓ View:	Trees/woods
Association:	0
Senior Community:	0
✓ Common Walls:	No Common Walls
Stories:	2
✓ Community Features:	Hiking, Park, Preserve/public Land, Mountainous, Biking, Fishing
✓ Parking:	0.00
✓ Parking:	On Site, Rv Potential, Gravel, Oversized
✓ Fireplace:	Family room, Wood Burning
✓ Lot Features:	Yard, Flag Lot
✓ Security:	Security system
✓ Patio:	Deck, Wrap Around

State:	California
County:	San Bernardino
City:	Sugar Loaf
Zipcode:	92386
Listing ID:	IV23097421

✓	Electric:	Standard
✓	Inclusions:	All Furniture And Decor Negotiable!, Stainless Steel Appliances, Washer And Dryer And Storage Shed In Rear Yard

Entry Level:		1
✓	Laundry:	Dryer Included, Washer Included
✓	Room Type:	Living Room, Kitchen, Laundry, All Bedrooms Up
✓	Roofing:	Shingle
✓	Flooring:	Wood
✓	Window Features:	Double Pane Windows
✓	Entry Location:	Front Door
✓	Property Condition:	Updated/remodeled
✓	Foundation Details:	Raised
✓	Exterior Features:	Lighting
✓	Interior Features:	2 Staircases

Main Level		1
Bathrooms:		
✓	Heating System:	Wood stove, Propane, Wall Furnace
✓	Utilities:	Sewer Connected, Water Connected, Electricity Connected, Propane, Phone Connected, Cable Connected
✓	Water Source:	Public
✓	Sewer:	Public Sewer
✓	Appliances:	Propane Range
✓	Accessibility Features:	Parking

Zoning: **BV/RS**

Parcel Number: **2350643430000**

Lot Size Square Feet: **4,620 Sqft**

TaxAnnualAmount: **\$0**

✓ RoomKitchenFeatures: **Granite Counters, Remodeled Kitchen**

✓ RoomBathroomFeatures: **Shower**

High School: **Arlington**

High School 2: **Arling**

Middle Or Junior School: **Miller**

High School District: **Bear Valley Unified**

Levels: **Two**

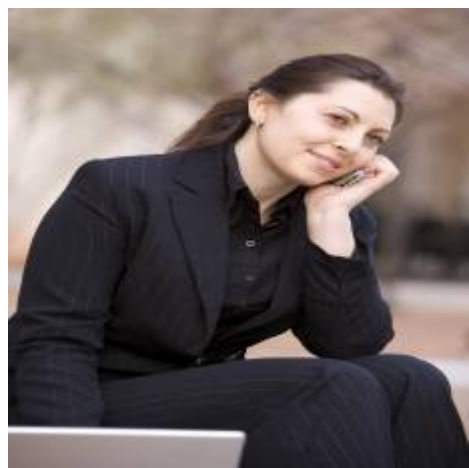
Taxes: **\$0**

Guest House SqFt: **0 Sqft**

Approx Lot SqFt: **0 Sqft**

✓ Special Listing Conditions: **Standard**

Agent [Info](#)



Rina Maya
☎ 858-876-7946
☎ 800-878-0907
✉ Questions@unitedbrokersinc.net