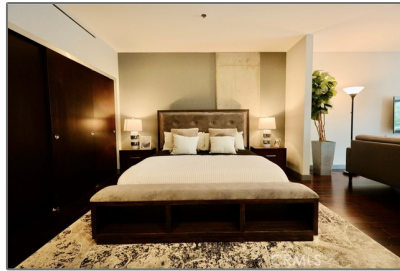


Commercial For Sale

2,310 Sqft - 1100 HopeStreet, Los Angeles,
California, 90015



Basic [Details](#)

Status:	Active
Listing Type:	For Sale
Property Type:	Commercial
Property SubType:	Office
Price:	\$1,595,000
Price Per Square Foot:	\$690
Square Footage:	2,310 Sqft
Year Built:	2007
View:	Mountain(s)
Country:	US
State:	California
County:	Los Angeles
City:	Los Angeles
Zipcode:	90015
Listing ID:	PW23091568

MLS [Addon](#)

Parcel Number:	5139005020
TaxAnnualAmount:	\$0

Features

Stories:	2
Entry Level:	1
<input checked="" type="checkbox"/> Laundry:	Dryer Included, Washer Included
<input checked="" type="checkbox"/> Water Source:	Public

TaxYear:	0
Taxes:	\$0
Guest House SqFt:	0 Sqft
Approx Lot SqFt:	0 Sqft
<div>✓</div> Special Listing Conditions:	Standard

Agent [Info](#)



Rina Maya
☎ 858-876-7946
☎ 800-878-0907
✉ Questions@unitedbrokersinc.net

-
