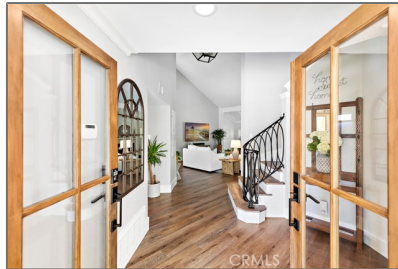


Residential For Sale

3,268 Sqft - 614 Calle Hidalgo, San Clemente,
California, 92673



Basic Details

Status:	Active
Listing Type:	For Sale
Property Type:	Residential
Property SubType:	Single Family Residence
Price:	\$1,895,000
Price Per Square Foot:	\$580
Square Footage:	3,268 Sqft
Lot Area:	0.21 Sqft
Year Built:	1980
View:	Mountain(s)
Bedrooms:	4
Bathrooms:	3
Bathrooms (Full):	3
Country:	US
State:	California
County:	Orange
City:	San Clemente
Zipcode:	92673
Listing ID:	LG23161686

Features

Association:	1
Senior Community:	0
✓ Common Walls:	No Common Walls
Stories:	2
✓ Community Features:	Sidewalks
✓ Amenities:	Picnic Area, Playground
AttachedGarage :	1
✓ Parking:	4.00
✓ Parking:	Driveway, Direct Garage Access, Electric Vehicle Charging Station(s)
Spa:	1
✓ Fireplace:	Living room, Den
✓ Lot Features:	Back Yard, Cul-de-sac, 0-1 Unit/acre, Sprinkler System, Landscaped, Yard, Garden
✓ Security:	Carbon monoxide detector(s), Security system, Smoke Detector(s)
✓ Electric:	Electricity - On Property

Entry Level:

1

✓	Laundry:	Inside
✓	Room Type:	Family Room, Living Room, Office, Separate Family Room, Walk-in Closet, Kitchen, Laundry, Master Suite, Main Floor Bedroom, Den, Entry, Bonus Room, Game Room
✓	Flooring:	Vinyl
✓	Window Features:	Blinds, Custom Covering, Shutters, Drapes
✓	Entry Location:	Downstairs
✓	Spa Construction:	Above Ground, Private
✓	Property Condition:	Turnkey
✓	Exterior Features:	Barbecue Private, Rain Gutters
✓	Interior Features:	Built-in Features, Crown Molding, High Ceilings, Open Floorplan, Recessed Lighting, Stone Counters, Cathedral Ceiling(s), Chair Railings, Quartz Counters

Main Level

1

Bathrooms:

Main Level

1

Bedrooms:

✓	Heating System:	Central
✓	Cooling System:	Central Air
✓	Utilities:	Sewer Connected, Water Connected, Electricity Connected, Natural Gas Connected, Phone Available, Cable Connected
✓	Water Source:	Public
✓	Sewer:	Public Sewer
✓	Appliances:	Dishwasher, Double Oven, 6 Burner Stove, Microwave, Refrigerator,

Gas Oven, Barbecue, Gas Cooktop, Water Line To Refrigerator, Ice Maker, Water Heater, Energy Star Qualified Appliances



Accessibility Features:

2+ Access Exits, 32 Inch Or More Wide Doors, 36 Inch Or More Wide Halls

MLS Addon

Association Fee Frequency: **Monthly**

Parcel Number: **68018122**

Lot Size Square Feet: **9,020**

✓ Exclusions: Entry And Dining Room Matching Chandeliers. Washer And Drier.

TaxAnnualAmount: **\$0**

Association Fee: **\$180**

✓ RoomKitchenFeatures: Kitchen Island, Quartz Counters, Remodeled Kitchen, Self-closing Cabinet Doors, Self-closing Drawers

✓ RoomBathroomFeatures: Shower, Bathtub, Closet In Bathroom, Double Sinks In Master Bath, Separate Tub And Shower, Exhaust Fan(s), Upgraded, Shower In Tub, Vanity Area, Privacy Toilet Door, Stone Counters

Garage Spaces: **2**

High School: **Arlington**

High School 2: **Arling**

Middle Or Junior School: **Miller**

High School District: **Capistrano Unified**

Levels: **Two**

✓	EatingArea:	Dining Room, In Kitchen, Area, In Family Room, Breakfast Nook
---	-------------	---

Taxes:	\$0
--------	-----

Guest House SqFt:	0
-------------------	---

Approx Lot SqFt:	0
------------------	---

✓	Special Listing Conditions:	Standard
---	-----------------------------	----------

Virtual Tour URL Unbranded:	Click Here
-----------------------------	----------------------------

Agent [Info](#)



Rina Maya
☎ 858-876-7946
☎ 800-878-0907
✉ Questions@unitedbrokersinc.net

-