

# Manufactured In Park For Sale

600 Sqft - 750 47th Avenue 10, Capitola, California, 95010



## Basic Details

Status:	Active
Listing Type:	For Sale
Property Type:	Manufactured In Park
Price:	\$210,000
Price Per Square Foot:	\$350
Square Footage:	600 Sqft
Year Built:	1959
View:	Mountain(s)
Bedrooms:	2
Bathrooms:	1
Bathrooms (Full):	1
State:	California
County:	Santa Cruz
City:	Capitola
Zipcode:	95010
Listing ID:	ML81940524

## MLS Addon

Zoning:	R-1:SINGLE FAM-RES
Parcel Number:	03476111000
TaxAnnualAmou	\$0

## Features

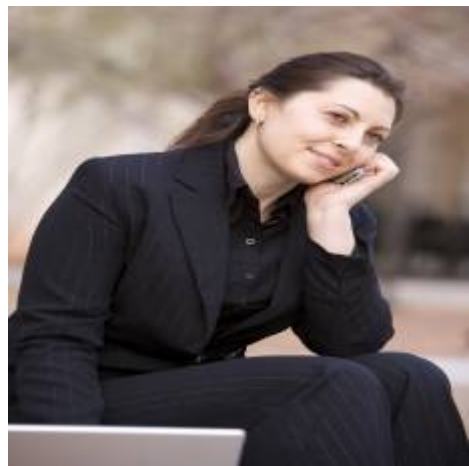
✓	View:	Ocean
✓	Common Walls:	No Common Walls
Stories:		1
✓	Amenities:	Clubhouse
AttachedGarage :		0
✓	Parking:	0.00
✓	Parking:	Guest
✓	Roofing:	Metal
✓	Flooring:	Wood, Tile
Main Level Bathrooms:		3
Main Level Bedrooms:		3
✓	Sewer:	Public Sewer
✓	Appliances:	Dishwasher, Range Hood

nt:

High School:	<b>Arlington</b>
High School 2:	<b>Arling</b>
Middle Or Junior School:	<b>Miller</b>
High School District:	<b>Other</b>
Taxes:	<b>\$0</b>
Guest House SqFt:	<b>0 Sqft</b>
Approx Lot SqFt:	<b>0 Sqft</b>
<div>✓</div> Special Listing Conditions:	<a href="#">Standard</a>

Agent [Info](#)

---



Rina Maya  
 858-876-7946  
 800-878-0907  
 [Questions@unitedbrokersinc.net](mailto:Questions@unitedbrokersinc.net)

-

---