

Residential For Sale

1,282 Sqft - 330 BurchettStreet, Glendale,
California, 91203



Basic Details

| | |
|------------------------|-------------|
| Status: | Active |
| Listing Type: | For Sale |
| Property Type: | Residential |
| Property SubType: | Condominium |
| Price: | \$748,500 |
| Price Per Square Foot: | \$584 |
| Square Footage: | 1,282 Sqft |
| Lot Area: | 0.40 Sqft |
| Year Built: | 1985 |
| View: | Mountain(s) |
| Bedrooms: | 3 |
| Bathrooms: | 2 |
| Bathrooms (Full): | 2 |
| Country: | US |
| State: | California |
| County: | Los Angeles |
| City: | Glendale |
| Zipcode: | 91203 |
| Listing ID: | SR23164145 |

Features

| | |
|-----------------------|---|
| Association: | 1 |
| Senior Community: | 0 |
| ✓ Common Walls: | 1 Common Wall, End Unit |
| Stories: | 1 |
| ✓ Community Features: | Dog Park, Foothills, Urban |
| ✓ Amenities: | Pets Permitted, Recreation Room, Trash, Maintenance Front Yard |
| AttachedGarage : | 0 |
| ✓ Parking: | 2.00 |
| ✓ Parking: | Gated, Garage - Single Door, Garage Door Opener, Parking Space, Subterranean, Driveway Up Slope From Street |
| ✓ Fireplace: | Living room |
| ✓ Inclusions: | Water And Gas |
| Entry Level: | 2 |
| ✓ Laundry: | Individual Room, Inside, Washer Hookup, Dryer Included, Washer Included, Common Area, |

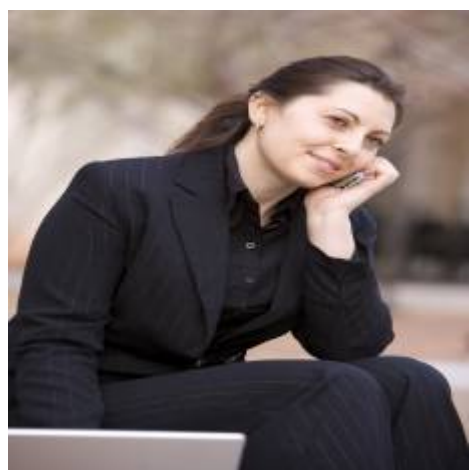
| | | |
|-----------------------|--------------------|---|
| | | In Closet |
| ✓ | Room Type: | Living Room, Kitchen, Laundry, Entry |
| ✓ | Entry Location | |
| ✓ | Interior Features: | Crown Molding, Recessed Lighting, Balcony, Granite Counters, Copper Plumbing Full, Living Room Balcony, Storage, Elevator |
| Main Level Bathrooms: | | 2 |
| Main Level Bedrooms: | | 3 |
| ✓ | Heating System: | Central |
| ✓ | Cooling System: | Central Air |
| ✓ | Water Source: | Public |
| ✓ | Sewer: | Public Sewer |
| ✓ | Appliances: | 6 Burner Stove, Energy Star Qualified Water Heater, Microwave, Water Heater, Energy Star Qualified Appliances |




MLS Addon

| | |
|----------------------------|------------------|
| Association Fee Frequency: | Monthly |
| Zoning: | GLRA* |
| Parcel Number: | 5636014089 |
| Lot Size Square Feet: | 17,230 |
| ✓ Exclusions: | Dryer And Washer |
| TaxAnnualAmount: | \$0 |
| Association Fee: | \$294 |
| Garage Spaces: | 2 |
| High School: | Arlington |

| | |
|---|----------------------------|
| High School 2: | Arling |
| Middle Or Junior School: | Miller |
| High School District: | Glendale Unified |
| Levels: | One |
| Taxes: | \$0 |
| Guest House SqFt: | 0 |
| Approx Lot SqFt: | 0 |
| <input checked="" type="checkbox"/> Special Listing Conditions: | Standard |
| Virtual Tour URL Unbranded: | Click Here |

Agent [Info](#)



Rina Maya
 858-876-7946
 800-878-0907
 Questions@unitedbrokersinc.net

-