

# Residential For Sale

4,437 Sqft - 28690 Martingale Drive, San Juan  
Capistrano, California, 92675



## Basic Details

Status:	Active
Listing Type:	For Sale
Property Type:	Residential
Property SubType:	Single Family Residence
Price:	\$4,752,000
Price Per Square Foot:	\$1,071
Square Footage:	4,437 Sqft
Lot Area:	0.25 Sqft
Year Built:	2018
View:	Mountain(s)
Bedrooms:	5
Bathrooms:	6
Bathrooms (Full):	5
Bathrooms (1/2):	1
Country:	US
State:	California
County:	Orange
City:	San Juan Capistrano

## Features

✓ View:	Neighborhood, Trees/woods, Pool
Association:	1
Senior Community:	0
✓ Common Walls:	No Common Walls
Stories:	2
✓ Community Features:	Sidewalks, Street Lights, Stable(s), Gutters
✓ Pool:	Heated, Private
✓ Amenities:	Biking Trails, Hiking Trails, Horse Trails
Attached Garage :	1
✓ Parking:	2.00
✓ Parking:	Garage
Spa:	1
✓ Fireplace:	Free standing, Patio, Outside
✓ Lot Features:	Back Yard, Front Yard, Lot 10000-19999 Sqft, Landscaped, Sprinklers Drip System, Lawn,

Zipcode:	92675	Corner Lot, Sprinklers In Rear, Sprinklers In Front
Listing ID:	NP23152102	
✓	Fence:	Wrought iron, Security, Block
✓	Security:	Automatic gate, Gated community, Carbon monoxide detector(s), Wired for alarm system, Security system, Smoke Detector(s), Fire Sprinkler System
✓	Patio:	Patio Open
✓	Electric:	220 Volts In Laundry, 220 Volts In Garage
Entry Level:		1
✓	Laundry:	Individual Room
✓	Room Type:	Family Room, Walk-in Closet, Kitchen, Laundry, Walk-in Pantry, Foyer, Primary Bathroom, Primary Bedroom
✓	Roofing:	Composition, Flat tile
✓	Flooring:	Stone, Wood
✓	Entry Location:	Main Floor
✓	Spa Construction:	Heated, Private
✓	Property Condition:	Turnkey
✓	Foundation Details:	Pillar/post/pier, Combination
✓	Exterior Features:	Rain Gutters
✓	Interior Features:	Built-in Features, High Ceilings, Open Floorplan, Pantry, Recessed Lighting, Wired For Sound, Balcony, Cathedral Ceiling(s), Beamed Ceilings, Storage, Quartz Counters
Main Level Bathrooms:		2
Main Level Bedrooms:		1

✓	Heating System:	Central
✓	Cooling System:	Dual, Central Air
✓	Utilities:	Sewer Connected, Water Connected, Natural Gas Connected
✓	Water Source:	Public
✓	Sewer:	Public Sewer
✓	Appliances:	Dishwasher, Disposal, Double Oven, 6 Burner Stove, Energy Star Qualified Water Heater, Microwave, Tankless Water Heater, Gas Oven, Barbecue, Range Hood, High Efficiency Water Heater, Energy Star Qualified Appliances

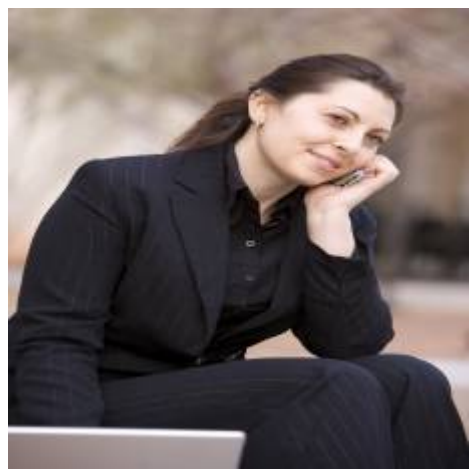
MLS Addon

Association Fee Frequency:	Monthly
Parcel Number:	66404145
Lot Size Square Feet:	10,765
TaxAnnualAmount:	\$0
Association Fee:	\$386
<div>✓</div> RoomKitchenFeatures:	Kitchen Island, Pots & Pan Drawers, Self-closing Cabinet Doors, Kitchen Open To Family Room, Walk-in Pantry, Utility Sink
<div>✓</div> RoomBathroomFeatures:	Shower, Closet In Bathroom, Soaking Tub, Walk-in Shower, Vanity Area, Tile Counters, Double Sinks In Primary Bath
Garage Spaces:	2
High School:	Arlington
High School 2:	Arling

Middle Or Junior School:	Miller
Elementary School:	Ambuehl
High School District:	Capistrano Unified
Levels:	Two
<div>✓</div> EatingArea:	In Kitchen, Breakfast Counter / Bar, Family Kitchen
Taxes:	\$0
Guest House SqFt:	0
Approx Lot SqFt:	0
<div>✓</div> Special Listing Conditions:	Standard

Agent [Info](#)

---



Rina Maya  
☎ 858-876-7946  
☎ 800-878-0907  
✉ [Questions@unitedbrokersinc.net](mailto:Questions@unitedbrokersinc.net)

-

---