

# Land For Sale

- 19501 SandyCourt, Tehachapi, California, 93561



## Basic Details

Status:	Active
Listing Type:	For Sale
Property Type:	Land
Property SubType:	Single Family Residence
Price:	\$180,000
Price Per Square Foot:	\$2
Lot Area:	2.08 Sqft
View:	Mountain(s)
Country:	US
State:	California
County:	Kern
City:	Tehachapi
Zipcode:	93561
Listing ID:	CV23161839

## MLS Addon

Zoning:	Residential
Parcel Number:	28923008006
Lot Size Square Feet:	90,605 Sqft
TaxAnnualAmount:	\$0

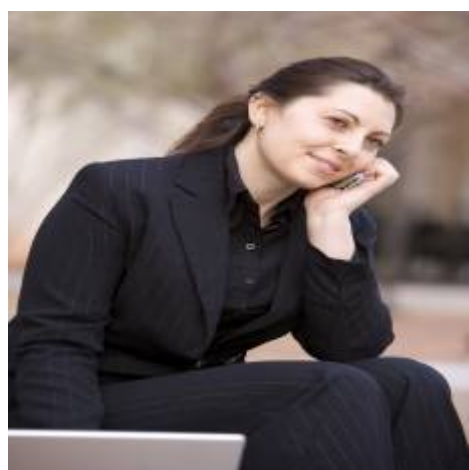
## Features

✓	View:	Neighborhood, Hills
Association:		0
Senior Community:		0
Stories:		1
✓	Community Features:	Suburban, Rural, Foothills
✓	Lot Features:	0-1 Unit/acre
Entry Level:		1
✓	Water Source:	Public

TaxYear:	0
Taxes:	\$0
Guest House SqFt:	0 Sqft
Approx Lot SqFt:	0 Sqft
<div>✓ Special Listing Conditions:</div>	Standard

Agent [Info](#)

---



Rina Maya  
☎ 858-876-7946  
☎ 800-878-0907  
✉ [Questions@unitedbrokersinc.net](mailto:Questions@unitedbrokersinc.net)

-

---