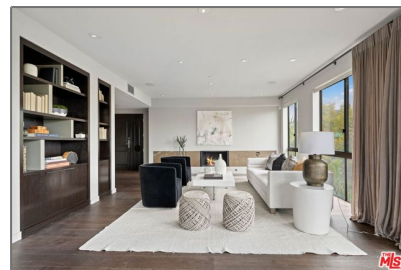
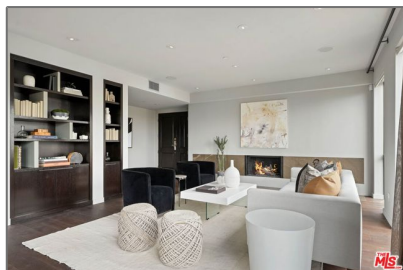


# Residential For Sale

2,833 Sqft - 121 CanonDrive, Beverly Hills,  
California, 90212



## Basic Details

Status:	Active
Listing Type:	For Sale
Property Type:	Residential
Property SubType:	Condominium
Price:	\$2,395,000
Price Per Square Foot:	\$845
Square Footage:	2,833 Sqft
Lot Area:	0.27 Sqft
Year Built:	1996
View:	Mountain(s)
Bedrooms:	3
Bathrooms:	4
Bathrooms (Full):	3
Bathrooms (1/2):	1
Country:	US
State:	California
County:	Los Angeles
City:	Beverly Hills

## Features

✓ View:	City Lights
Association:	1
Senior Community:	0
Stories:	4
✓ Pool:	In ground, Association, Community
✓ Amenities:	Pool, Recreation Room, Controlled Access
✓ Parking:	3.00
✓ Parking:	Garage - Three Door, Assigned, Community Structure
✓ Fireplace:	Family room, Primary Bedroom
✓ Security:	Carbon monoxide detector(s), Fire Sprinkler System
Entry Level:	3
✓ Laundry:	Dryer Included
✓ Room Type:	Family Room, Formal Entry, Living Room, Walk-in Closet, Entry, Wine Cellar, Dressing

Zipcode:	<b>90212</b>
Listing ID:	<b>23308630</b>

✓	Flooring:	Area, Primary Bathroom
✓	Heating System:	Wood, Carpet
✓	Cooling System:	Central
✓	Appliances:	Dual
✓		Dishwasher, Disposal

MLS [Addon](#)

Association Fee Frequency:	<b>Monthly</b>
Zoning:	<b>BHR4*</b>
Parcel Number:	<b>4331001068</b>
Lot Size Square Feet:	<b>11,877</b>
✓ Exclusions	
TaxAnnualAmount:	<b>\$0</b>
Association Fee:	<b>\$685</b>
High School:	<b>Arlington</b>
High School 2:	<b>Arling</b>
Middle Or Junior School:	<b>Miller</b>
Levels:	<b>One</b>
Taxes:	<b>\$0</b>
Guest House SqFt:	<b>0</b>
Approx Lot SqFt:	<b>0</b>
✓ Special Listing Conditions:	<b>Standard</b>

Agent [Info](#)

---



Rina Maya

☎ 858-876-7946

☎ 800-878-0907

✉ [Questions@unitedbrokersinc.net](mailto:Questions@unitedbrokersinc.net)

---