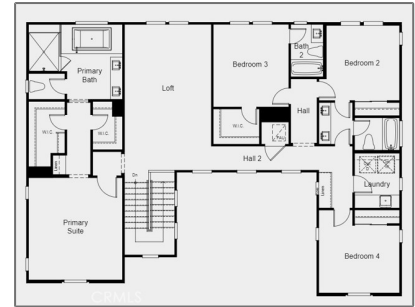
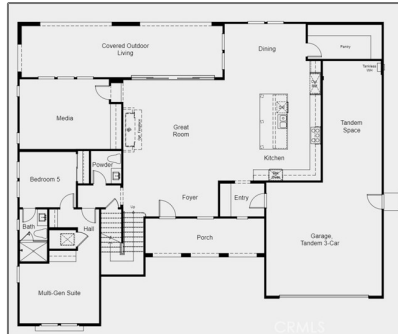


Residential For Sale

3,799 Sqft - 1129 Juniper Drive, Glendora, California, 91741



Basic Details

Status: **Active**

Listing Type: **For Sale**

Property Type: **Residential**

Property SubType: **Single Family Residence**

Price: **\$1,914,760**

Price Per Square Foot: **\$504**

Square Footage: **3,799 Sqft**

Lot Area: **0.46 Sqft**

Year Built: **2024**

View: **Mountain(s)**

Bedrooms: **5**

Bathrooms: **5**

Bathrooms (Full): **4**

Bathrooms (1/2): **1**

Country: **US**

State: **California**

County: **Los Angeles**

City: **Glendora**

Features

Association: **1**

Senior Community: **0**

✓ Common Walls: **No Common Walls**

Stories: **2**

✓ Community Features: **Sidewalks, Street Lights, Curbs, Foothills**

✓ Amenities: **Playground, Maintenance Grounds**

Attached Garage: **1**

✓ Parking: **3.00**

✓ Parking: **Direct Garage Access, Tandem Garage**

Spa: **0**

✓ Fireplace: **See remarks**

✓ Lot Features: **Back Yard, Front Yard, Corner Lot**

✓ Security: **Carbon monoxide detector(s), Smoke Detector(s)**

✓ Patio: **Covered, Front Porch, Rear Porch**

Zipcode:	91741	✓	Laundry:	Gas Dryer Hookup, Inside, Washer Hookup, Upper Level
Listing ID:	EV23056231	✓	Room Type:	Loft, Walk-in Closet, Kitchen, Laundry, Great Room, Walk-in Pantry, Main Floor Bedroom, Foyer
		✓	Flooring:	See Remarks
		✓	Property Condition:	Under Construction
		✓	Interior Features:	Open Floorplan, Pantry, Recessed Lighting, In-law Floorplan, Storage
Main Level Bathrooms:		2		
Main Level Bedrooms:		1		
		✓	Heating System:	Central
		✓	Cooling System:	Dual, Central Air
		✓	Utilities:	Sewer Connected, Water Connected, Cable Available, Electricity Connected, Natural Gas Connected, Phone Available, Underground Utilities
		✓	Water Source:	Public
		✓	Sewer:	Public Sewer, Holding Tank
		✓	Appliances:	Dishwasher, Disposal, 6 Burner Stove, Gas Range, Microwave, Refrigerator, Tankless Water Heater, Gas Oven, Range Hood

MLS Addon

Association Fee Frequency:	Monthly
Zoning:	Residential
Lot Size Square Feet:	20,241 Sqft

TaxAnnualAmount:	\$0
------------------	-----

Association Fee:	\$385
------------------	-------

✓	RoomKitchenFeatures:	Kitchen Island, Quartz Counters, Self-closing Cabinet Doors, Kitchen Open To Family Room, Self-closing Drawers, Walk-in Pantry
✓	RoomBathroomFeatures:	Bathtub, Walk-in Shower, Exhaust Fan(s), Linen Closet/storage, Shower In Tub, Double Sinks In Bath(s), Vanity Area, Privacy Toilet Door, Double Sinks In Primary Bath

Garage Spaces:	3
----------------	---

High School:	Arlington
--------------	-----------

High School 2:	Arling
----------------	--------

Middle Or Junior School:	Miller
--------------------------	--------

High School District:	Glendora Unified
-----------------------	------------------

Levels:	Two
---------	-----

✓	EatingArea:	Dining Room, Breakfast Counter / Bar
---	-------------	--------------------------------------

Taxes:	\$0
--------	-----

Guest House SqFt:	0 Sqft
-------------------	--------

Approx Lot SqFt:	0 Sqft
------------------	--------

✓	Special Listing Conditions:	Standard
---	-----------------------------	----------

Agent [Info](#)



Rina Maya

☎ 858-876-7946

☎ 800-878-0907

✉ Questions@unitedbrokersinc.net
