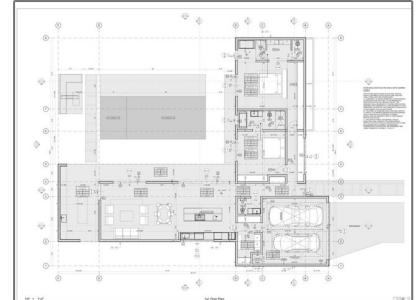


# Land For Sale

- 60304 GranadaDrive, Joshua Tree, California,  
92252



## Basic Details

Status: **Active**

Listing Type: **For Sale**

Property Type: **Land**

Property SubType: **Single Family Residence**

Price: **\$79,990**

Price Per Square Foot: **\$3**

Lot Area: **0.62 Sqft**

View: **Mountain(s)**

Bathrooms: **2**

Country: **US**

State: **California**

County: **San Bernardino**

City: **Joshua Tree**

Zipcode: **92252**

Listing ID: **GD23169690**

## Features

✓ View: **Desert**

Association: **0**

Senior Community: **0**

✓ Common Walls: **1 Common Wall**

Stories: **2**

✓ Community Features: **Hiking**

✓ Amenities: **Pool, Spa/hot Tub, Tennis Court(s), Cable Tv, Pet Rules, Controlled Access, Trash, Water, Hot Water, Gas**

✓ Parking: **Assigned**

Spa: **1**

✓ Lot Features: **Corner Lot**

Entry Level: **2**

✓ Laundry: **Stackable, See Remarks, In Closet**

✓ Flooring: **Laminate**

✓ Entry Location

✓ Spa Construction: **In Ground, Association**

✓	Interior Features:	Built-in Features, High Ceilings, Open Floorplan, Recessed Lighting, Living Room Deck Attached
Main Level Bathrooms: 2		
Main Level Bedrooms: 2		
✓	Utilities:	Electricity Available, Water Available, Sewer Not Available
✓	Water Source:	Public
✓	Appliances:	Dishwasher, Microwave, Refrigerator, Electric Range

MLS Addon

Zoning:	JT/RS-14M
Parcel Number:	0601462010000
Lot Size Square Feet:	26,900 Sqft
TaxAnnualAmount:	\$0
TaxYear:	0
✓ RoomBathroomFeatures:	Shower, Bathtub, Exhaust Fan(s), Shower In Tub, Vanity Area
High School:	Palm Springs
High School 2:	Palspr
Middle Or Junior School:	Miller
High School District:	Palm Springs Unified
Levels:	One
✓ EatingArea:	Dining Room, Separated
Taxes:	\$0
Guest House SqFt:	0 Sqft

Approx Lot SqFt: **0 Sqft**

✓

Special Listing  
Conditions:

Standard

Agent [Info](#)

---



Rina Maya  
☎ 858-876-7946  
☎ 800-878-0907  
✉ [Questions@unitedbrokersinc.net](mailto:Questions@unitedbrokersinc.net)

-

---