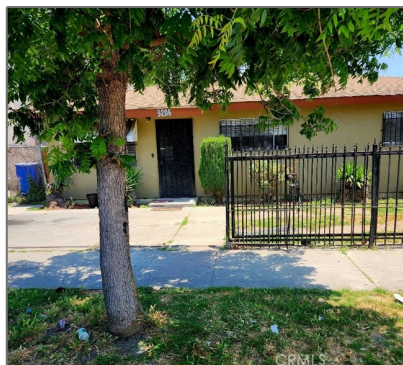


Residential For Sale

1,000 Sqft - 9206 San Pedro Street, Los Angeles, California, 90003



Basic Details

Status:	Active
Listing Type:	For Sale
Property Type:	Residential
Property SubType:	Single Family Residence
Price:	\$530,000
Price Per Square Foot:	\$530
Square Footage:	1,000 Sqft
Lot Area:	0.12 Sqft
Year Built:	1970
View:	Mountain(s)
Bedrooms:	3
Bathrooms:	1
Bathrooms (Full):	1
Country:	US
State:	California
County:	Los Angeles
City:	Los Angeles

Features

✓ View:	Neighborhood
Association:	0
Senior Community:	0
✓ Common Walls:	No Common Walls
Stories:	1
✓ Community Features:	Street Lights, Urban
✓ Parking:	0.00
✓ Parking:	Driveway - Combination
Spa:	0
✓ Lot Features:	0-1 Unit/acre
✓ Fence:	Chain link
✓ Security:	Fire and smoke detection system
✓ Patio:	Porch
Entry Level:	1
✓ Laundry:	See Remarks
✓ Room Type:	Main Floor Bedroom, All

Zipcode:	90003		Bedrooms Down, Entry
Listing ID:	PW23119591	✓ Roofing:	Composition
		✓ Entry Location:	: Ground Level W/steps
		✓ Foundation Details:	Concrete Perimeter
		✓ Interior Features:	Laminate Counters
		Main Level Bathrooms:	1
		Main Level Bedrooms:	1
		✓ Heating System:	electric
		✓ Cooling System:	Gas
		✓ Water Source:	Public
		✓ Sewer:	Public Sewer
		✓ Accessibility Features:	Parking

MLS [Addon](#)

Zoning:	LAR4
Parcel Number:	6052024035
Lot Size Square Feet:	5,218
TaxAnnualAmount:	\$0
✓ RoomBathroomFeatures:	Shower In Tub
High School:	Arlington
High School 2:	Arling
Middle Or Junior School:	Miller
High School District:	Los Angeles Unified
Levels:	One
✓ EatingArea:	In Kitchen
Taxes:	\$0

Guest House
SqFt: 0

Approx Lot SqFt: 0

✓

Special Listing
Conditions:

Standard

Agent [Info](#)



Rina Maya
☎ 858-876-7946
☎ 800-878-0907
✉ Questions@unitedbrokersinc.net

-
