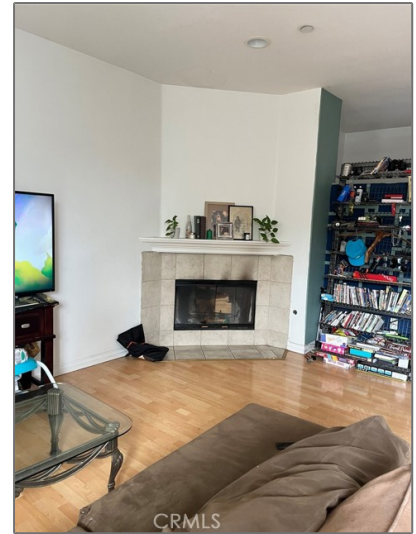


# Residential For Sale

2,105 Sqft - 15448 Mustang Lane, North Hills,  
California, 91343



## Basic Details

Status:	<b>Active</b>
Listing Type:	<b>For Sale</b>
Property Type:	<b>Residential</b>
Property SubType:	<b>Single Family Residence</b>
Price:	<b>\$729,000</b>
Price Per Square Foot:	<b>\$346</b>
Square Footage:	<b>2,105 Sqft</b>
Lot Area:	<b>1.30 Sqft</b>
Year Built:	<b>2006</b>
View:	<b>Mountain(s)</b>
Bedrooms:	<b>5</b>
Bathrooms:	<b>3</b>
Bathrooms (Full):	<b>3</b>
Country:	<b>US</b>
State:	<b>California</b>

## Features

Association:	<b>1</b>
Senior Community:	<b>0</b>
✓ Common Walls:	<b>No Common Walls</b>
Stories:	<b>2</b>
✓ Community Features:	<b>Suburban</b>
✓ Amenities:	<b>Security</b>
AttachedGarage :	<b>1</b>
✓ Parking:	<b>2.00</b>
✓ Fireplace:	<b>Library</b>
Entry Level:	<b>1</b>
✓ Laundry:	<b>Inside, See Remarks</b>
✓ Room Type:	<b>Living Room, Kitchen, All Bedrooms Up, Walk-in Pantry</b>
✓ Entry Location	

County:	<b>Los Angeles</b>
City:	<b>North Hills</b>
Zipcode:	<b>91343</b>
Listing ID:	<b>SR23170622</b>

✓ Interior Features: [Built-in Features, High Ceilings, Open Floorplan, Cathedral Ceiling\(s\)](#)

Main Level **1**  
Bathrooms:

✓ Heating System: [Central](#)

✓ Cooling System: [Central Air](#)

✓ Water Source: [Public](#)

✓ Sewer: [Public Sewer](#)

✓ Appliances: [Dishwasher](#)

✓ Accessibility Features: [Parking, No Interior Steps, See Remarks](#)

### MLS Addon

Association Fee Frequency: **Monthly**

Parcel Number: **2654020073**

Lot Size Square Feet: **56,628 Sqft**

TaxAnnualAmount: **\$0**

Association Fee: **\$140**

Garage Spaces: **2**

High School: **Arlington**

High School 2: **Arling**

Middle Or Junior School: **Miller**

High School District: **Los Angeles Unified**

Levels: **Two**

Taxes: **\$0**

Guest House SqFt: **0 Sqft**

Approx Lot SqFt: **0 Sqft**

✓ Special Listing [Probate Listing](#)

Conditions:

## Agent Info

---



Rina Maya

☎ 858-876-7946

☎ 800-878-0907

✉ [Questions@unitedbrokersinc.net](mailto:Questions@unitedbrokersinc.net)

---