

# Land For Sale

- 69411 RamonRoad, Cathedral City, California,  
92234



## Basic [Details](#)

Status: **Active**

Listing Type: **For Sale**

Property Type: **Land**

Property SubType: **Single Family Residence**

Price: **\$240,000**

Price Per Square Foot: **\$110**

Lot Area: **0.05 Sqft**

View: **Mountain(s)**

Country: **US**

State: **California**

County: **Riverside**

City: **Cathedral City**

Zipcode: **92234**

Listing ID: **219101114PS**

## MLS [Addon](#)

Parcel Number: **673112032**

Lot Size Square Feet: **2,178 Sqft**

TaxAnnualAmou **\$0**

## Features



View:

[Mountain\(s\), Golf Course, Lake](#)

Association: **0**

Senior Community: **0**



Lot Features:

[Close To Clubhouse, Landscaped, Level, Paved, Corner Lot, Corners Marked, On Golf Course](#)



Utilities:

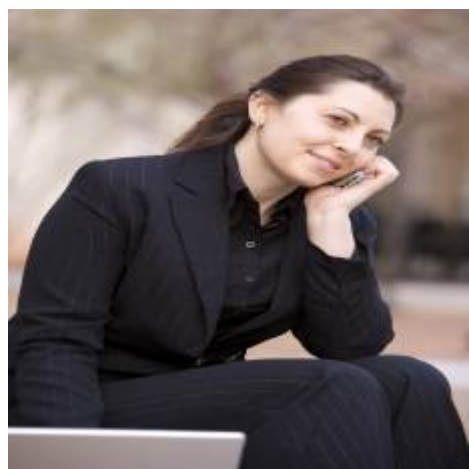
[Sewer Connected, Electricity Connected, Propane, Phone Connected, Underground Utilities](#)

nt:

TaxYear:	0
Association Fee:	\$492
Taxes:	\$0
Guest House SqFt:	0 Sqft
Approx Lot SqFt:	0 Sqft
<div>✓</div> Special Listing Conditions:	Standard

Agent [Info](#)

---



Rina Maya  
☎ 858-876-7946  
☎ 800-878-0907  
✉ [Questions@unitedbrokersinc.net](mailto:Questions@unitedbrokersinc.net)

-

---