

# Residential For Sale

2,700 Sqft - 4117 Amalfi Drive, Palmdale,  
California, 93552



## Basic Details

Status:	Active
Listing Type:	For Sale
Property Type:	Residential
Property SubType:	Single Family Residence
Price:	\$580,000
Price Per Square Foot:	\$215
Square Footage:	2,700 Sqft
Lot Area:	0.16 Sqft
Year Built:	1990
View:	Mountain(s)
Bedrooms:	3
Bathrooms:	3
Bathrooms (Full):	3
Country:	US
State:	California
County:	Los Angeles
City:	Palmdale
Zipcode:	93552
Listing ID:	SR23189255

## Features

✓ View:	See Remarks
Association:	0
Senior Community:	0
✓ Common Walls:	2+ Common Walls
Stories:	2
✓ Community Features:	Sidewalks, Street Lights, Golf, Suburban, Hiking, Park, Curbs, Horse Trails, Dog Park, Foothills, Biking, Storm Drains, Lake
AttachedGarage :	1
✓ Parking:	2.00
✓ Parking:	Direct Garage Access, Paved, Garage, Garage Faces Side, Concrete, Driveway - Combination
Spa:	0
✓ Fireplace:	Gas, Family room, Gas starter, Wood Burning
✓ Lot Features:	Front Yard, Park Nearby, Sprinkler System, Lot 10000-19999 Sqft, Landscaped, Irregular Lot, Sprinklers Drip

		System, Lot 6500-9999, Level, Yard, Lawn, Sprinklers In Rear, Sprinklers In Front, Sprinklers Timer
✓	Fence:	Wood, Block
✓	Security:	Fire and smoke detection system, Carbon monoxide detector(s), 24 hour security, Smoke Detector(s)
✓	Patio:	Covered, Patio, Concrete, Slab
✓	Electric:	Standard
Entry Level:		<b>1</b>
✓	Laundry:	Inside
✓	Room Type:	Family Room, Formal Entry, Living Room, Kitchen, Laundry, All Bedrooms Up, Primary Suite, Primary Bathroom, Primary Bedroom
✓	Flooring:	Carpet, Tile, Laminate
✓	Window Features:	Double Pane Windows
✓	Entry Location:	Steps
✓	Property Condition:	Turnkey
✓	Foundation Details:	Slab
✓	Interior Features:	Built-in Features, High Ceilings, Open Floorplan, Recessed Lighting, Wired For Sound, Ceiling Fan(s), Block Walls, Tile Counters, Ceramic Counters
Main Level Bathrooms:		<b>2</b>
Main Level Bedrooms:		<b>2</b>
✓	Heating System:	Central
✓	Cooling System:	Central Air

✓	Utilities:	Sewer Connected, Water Connected, Cable Available, Electricity Connected, Phone Connected, Cable Connected
✓	Water Source:	Public
✓	Sewer:	Public Sewer
✓	Appliances:	Disposal, Double Oven, Gas & Electric Range, Convection Oven, Range Hood

## MLS Addon

Zoning:	LCA11*	
Parcel Number:	3052073013	
Lot Size Square Feet:	7,118 Sqft	
TaxAnnualAmount:	\$0	
✓ RoomKitchenFeatures:	Tile Counters	
✓ RoomBathroomFeatures:	Shower, Bathtub, Closet In Bathroom, Separate Tub And Shower, Walk-in Shower, Exhaust Fan(s), Shower In Tub, Double Sinks In Bath(s), Low Flow Shower, Low Flow Toilet(s)	
Garage Spaces:	2	
High School:	Arlington	
High School 2:	Arling	
Middle Or Junior School:	Miller	
High School District:	Palmdale	
Levels:	Two	
✓ EatingArea:	Dining Room, In Kitchen, Area, Breakfast Counter / Bar, Family Kitchen	
Taxes:	\$0	

Guest House  
SqFt:

0 Sqft

Approx Lot SqFt:

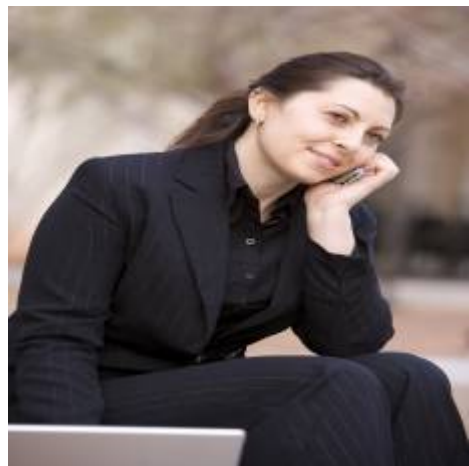
0 Sqft

✓ Special Listing  
Conditions:

Standard

Agent [Info](#)

---



Rina Maya  
☎ 858-876-7946  
☎ 800-878-0907  
✉ [Questions@unitedbrokersinc.net](mailto:Questions@unitedbrokersinc.net)

-

---