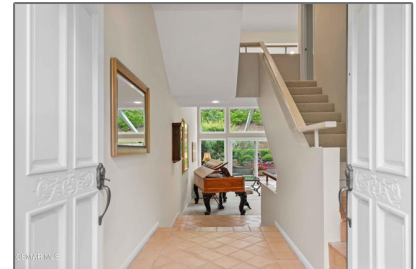


Residential For Sale

2,267 Sqft - 1527 ViewDrive, Westlake Village,
California, 91362



Basic Details

Status: **Active**

Listing Type: **For Sale**

Property Type: **Residential**

Property SubType: **Condominium**

Price: **\$1,160,000**

Price Per Square Foot: **\$512**

Square Footage: **2,267 Sqft**

Lot Area: **0.05 Sqft**

Year Built: **1981**

View: **Mountain(s)**

Bedrooms: **3**

Bathrooms: **3**

Bathrooms (Full): **2**

Bathrooms (1/2): **1**

State: **California**

County: **Ventura**

City: **Westlake Village**

Zipcode: **91362**

Listing ID: **223004113**

Features

Association: **1**

Senior Community: **0**

Stories: **3**

✓ Amenities: **Maintenance Grounds**

✓ Parking: **2.00**

✓ Parking: **Driveway, Direct Garage Access, Garage - Single Door, Garage Door Opener, Guest**

Spa: **1**

✓ Fireplace: **Gas, Living room**

✓ Lot Features: **Landscaped**

✓ Patio: **Brick**

✓ Laundry: **Inside**

✓ Room Type: **Bonus Room, Primary Suite**

✓ Flooring: **Carpet**

✓ Window Features: **Double Pane Windows, Blinds, Drapes**

✓ Entry Location: **South**

✓ Spa Construction: **Above Ground**

✓	Interior Features:	Wet Bar, Balcony, Cathedral Ceiling(s)
✓	Appliances:	Dishwasher, Refrigerator

MLS [Addon](#)

Association Fee Frequency:	Monthly
Zoning:	RPD1.5
Parcel Number:	6900280635
Lot Size Square Feet:	2,267 Sqft
✓ Exclusions:	Tvs & Brackets
TaxAnnualAmount:	\$0
Association Fee:	\$660
✓ RoomKitchenFeatures:	Tile Counters
Garage Spaces:	2
High School:	Arlington
High School 2:	Arling
Middle Or Junior School:	Miller
Levels:	Three Or More
✓ EatingArea:	Family Kitchen
Taxes:	\$0
Guest House SqFt:	0 Sqft
Approx Lot SqFt:	0 Sqft
✓ Special Listing Conditions:	Standard

Agent [Info](#)



Rina Maya

☎ 858-876-7946

☎ 800-878-0907

✉ Questions@unitedbrokersinc.net
