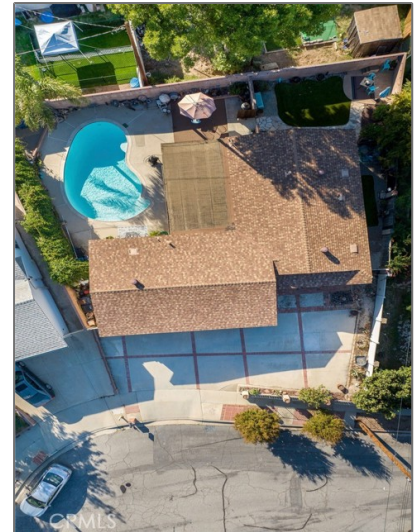


# Residential For Sale

1,042 Sqft - 1561 Eloise Circle, Simi Valley,  
California, 93063



## Basic Details

Status:	Active
Listing Type:	For Sale
Property Type:	Residential
Property SubType:	Single Family Residence
Price:	\$749,000
Price Per Square Foot:	\$719
Square Footage:	1,042 Sqft
Lot Area:	0.16 Sqft
Year Built:	1964
View:	Mountain(s)
Bedrooms:	2
Bathrooms:	1
Bathrooms (Full):	1
Country:	US
State:	California

## Features

✓ View:	Mountain(s), Hills, See Remarks
Association:	0
Senior Community:	0
✓ Common Walls:	No Common Walls
Stories:	1
✓ Community Features:	Sidewalks, Street Lights, Suburban, Gutters, Biking
✓ Pool:	In ground, Private
AttachedGarage :	1
✓ Parking:	9.00
✓ Parking:	Driveway, Direct Garage Access, Concrete, Rv Potential, Garage Faces Front, Oversized, Driveway Up Slope From Street

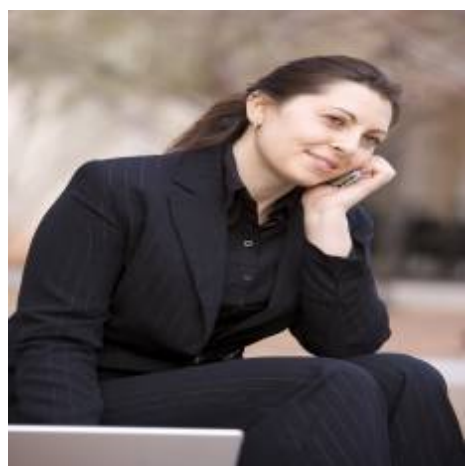
County:	<b>Ventura</b>
City:	<b>Simi Valley</b>
Zipcode:	<b>93063</b>
Listing ID:	<b>SR23185812</b>

Spa:	<b>1</b>
✓ Lot Features:	Back Yard, Cul-de-sac, Park Nearby, Up Slope From Street
✓ Fence:	Block
✓ Patio:	Covered, Patio Open, Concrete, Rear Porch
✓ Electric:	Standard, 220 Volts For Spa
Entry Level:	<b>1</b>
✓ Laundry:	In Garage
✓ Room Type:	Living Room, Kitchen, Main Floor Bedroom, All Bedrooms Down, Den
✓ Roofing:	Shingle
✓ Flooring:	See Remarks
✓ Window Features:	Double Pane Windows
✓ Entry Location:	Livingroom
✓ Spa Construction:	Private
✓ Property Condition:	Turnkey
✓ Foundation Details:	Slab
✓ Interior Features:	Ceiling Fan(s)
Main Level Bathrooms:	<b>1</b>
Main Level Bedrooms:	<b>2</b>
✓ Heating System:	Forced air
✓ Cooling System:	Central Air
✓ Utilities:	Sewer Connected, Water Connected, Electricity Connected, Natural Gas Connected
✓ Water Source:	Public
✓ Sewer:	Public Sewer

MLS [Addon](#)

Zoning:	RM4.15
Parcel Number:	6510053045
Lot Size Square Feet:	6,935 Sqft
TaxAnnualAmount:	\$0
Garage Spaces:	2
High School:	Arlington
High School 2:	Arling
Middle Or Junior School:	Miller
High School District:	Simi Valley Unified
Levels:	One
<input checked="" type="checkbox"/> EatingArea:	Dining Room
Taxes:	\$0
Guest House SqFt:	0 Sqft
Approx Lot SqFt:	0 Sqft
<input checked="" type="checkbox"/> Special Listing Conditions:	Standard
Virtual Tour URL Unbranded:	<a href="#">Click Here</a>

Agent [Info](#)



Rina Maya  
 858-876-7946  
 800-878-0907  
 [Questions@unitedbrokersinc.net](mailto:Questions@unitedbrokersinc.net)

