

Manufactured In Park For Sale

648 Sqft - 1001 Lambert Road, La Habra, California, 90631



Basic Details

Status:	Active
Listing Type:	For Sale
Property Type:	Manufactured In Park
Price:	\$74,999
Price Per Square Foot:	\$116
Square Footage:	648 Sqft
Lot Area:	31.82 Sqft
Year Built:	1971
View:	Mountain(s)
Bedrooms:	1
Bathrooms:	1
Bathrooms (Full):	1
Country:	US
State:	California
County:	Orange
City:	La Habra

Features

Association:	0
Senior Community:	1
Stories:	1
✓ Pet Policy:	Breed restrictions
✓ Community Features:	Street Lights, Dog Park
✓ Pool:	Fenced, Heated, In ground, Community
✓ Parking:	0.00
Spa:	1
✓ Lot Features:	Close To Clubhouse, Landscaped, 31-35 Units/acre
Entry Level:	1
✓ Laundry:	Inside, Dryer Included, Washer Included
✓ Room Type:	All Bedrooms Down
✓ Entry Location:	Front Patio Deck
✓ Spa Construction:	

Zipcode: **90631**

Listing ID: **RS23180998**

Community, In Ground

✓ Heating System:

Heat Pump

✓ Cooling System:

Wall/window Unit(s)

✓ Water Source:

Public

✓ Sewer:

Public Sewer

✓ Appliances:

Gas Cooktop

MLS [Addon](#)

Parcel Number: **89009094**

Lot Size Square Feet: **1,386,158 Sqft**

TaxAnnualAmount: **\$0**

High School: **Arlington**

High School 2: **Arling**

Middle Or Junior School: **Miller**

High School District: **Lowell Joint Unified**

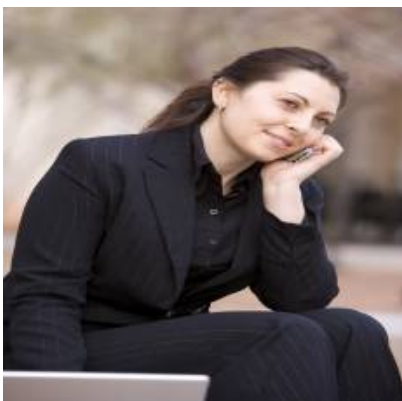
Taxes: **\$0**

Guest House SqFt: **0 Sqft**

Approx Lot SqFt: **0 Sqft**

✓ Special Listing Conditions: [Standard](#)

Agent [Info](#)



Rina Maya

☎ 858-876-7946

☎ 800-878-0907

✉ Questions@unitedbrokersinc.net

