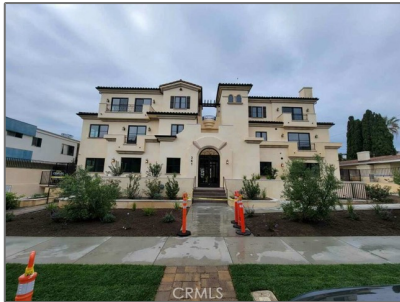


# Residential For Sale

1,292 Sqft - 361 MyrtleStreet, Glendale,  
California, 91203



## Basic Details

Status: **Active**

Listing Type: **For Sale**

Property Type: **Residential**

Property SubType: **Condominium**

Price: **\$899,000**

Price Per Square Foot: **\$696**

Square Footage: **1,292 Sqft**

Lot Area: **0.35 Sqft**

Year Built: **2023**

View: **Mountain(s)**

Bedrooms: **2**

Bathrooms: **2**

Bathrooms (Full): **2**

Country: **US**

State: **California**

County: **Los Angeles**

City: **Glendale**

Zipcode: **91203**

## Features

✓ View: **Neighborhood**

Association: **1**

Senior Community: **0**

✓ Common Walls: **2+ Common Walls**

Stories: **3**

✓ Community Features: **Sidewalks, Street Lights, Curbs, Gutters, Storm Drains**

✓ Amenities: **Maintenance Grounds, Controlled Access, Trash, Insurance, Maintenance Front Yard**

AttachedGarage : **0**

✓ Parking: **2.00**

✓ Parking: **Auto Driveway Gate, Parking Space, Driveway Down Slope From Street**

Spa: **0**

✓ Lot Features: **Lot 10000-19999 Sqft, Landscaped, Rectangular Lot**

✓ Fence: **Stucco wall, Masonry,**

Listing ID: <b>SR23192692</b>		New condition
✓	Security:	Fire and smoke detection system, Carbon monoxide detector(s), Smoke Detector(s), Fire Sprinkler System
✓	Electric:	Electricity - On Property
✓	Inclusions:	Fridge, Washer, Washer/dryer And Refrigerator.
Entry Level:		<b>1</b>
✓	Laundry:	Gas Dryer Hookup
✓	Room Type:	Family Room, Main Floor Bedroom
✓	Roofing:	Asphalt
✓	Window Features:	Double Pane Windows
✓	Entry Location:	688
✓	Foundation Details:	Slab, Combination
✓	Exterior Features:	Rain Gutters
✓	Interior Features:	Open Floorplan, Recessed Lighting, Wired For Data, Balcony, Living Room Balcony, Intercom, Quartz Counters
Main Level Bathrooms:		<b>2</b>
Main Level Bedrooms:		<b>2</b>
✓	Heating System:	natural gas
✓	Cooling System:	Central Air
✓	Utilities:	Sewer Connected, Water Connected, Cable Available, Electricity Connected, Natural Gas Connected
✓	Water Source:	Public
✓	Sewer:	Public Sewer

✓	Appliances:	Dishwasher, Disposal, Gas Range, Tankless Water Heater, Freezer
✓	Accessibility Features:	2+ Access Exits, No Interior Steps, 36 Inch Or More Wide Halls, Ramp - Main Level

### MLS Addon

Association Fee Frequency:	Monthly
Parcel Number:	5637005030
Lot Size Square Feet:	15,398 Sqft
TaxAnnualAmount:	\$0
Association Fee:	\$517
✓ RoomKitchenFeatures:	Quartz Counters, Kitchen Open To Family Room
✓ RoomBathroomFeatures:	Shower, Main Floor Full Bath, Double Sinks In Primary Bath
Garage Spaces:	2
High School:	Arlington
High School 2:	Arling
Middle Or Junior School:	Miller
High School District:	Glendale Unified
Levels:	One
✓ EatingArea:	Family Kitchen
Taxes:	\$0
Guest House SqFt:	0 Sqft
Approx Lot SqFt:	0 Sqft
✓ Special Listing Conditions:	Standard



Rina Maya  
☎ 858-876-7946  
☎ 800-878-0907  
✉ [Questions@unitedbrokersinc.net](mailto:Questions@unitedbrokersinc.net)