

Manufactured In Park For Sale

- 1660 Whittier Avenue, Costa Mesa, California, 92627



Basic Details

Status:	Active
Listing Type:	For Sale
Property Type:	Manufactured In Park
Price:	\$209,000
Year Built:	2004
View:	Mountain(s)
Bedrooms:	1
Bathrooms:	1
Bathrooms (Full):	1
Country:	US
State:	California
County:	Orange
City:	Costa Mesa
Zipcode:	92627
Listing ID:	OC23194721

Features

Association:	0
Senior Community:	1
Stories:	2
✓ Pet Policy:	Breed restrictions
✓ Community Features:	Street Lights
✓ Parking:	2.00
✓ Parking:	Attached Carport
Spa:	0
✓ Lot Features:	Corner Lot
Entry Level:	1
✓ Laundry:	Inside
✓ Entry Location	
✓ Heating System:	Central
✓ Water Source:	Public
✓ Sewer:	Public Sewer

MLS Addon

TaxAnnualAmount: \$0

High School: Arlington

High School 2: Arling

Middle Or Junior School: Miller

High School District: Newport Mesa Unified

Taxes: \$0

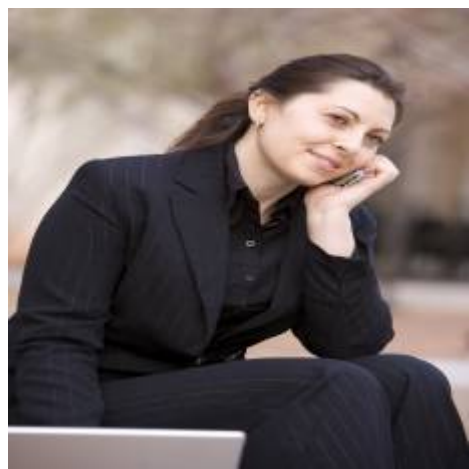
Guest House SqFt: 0 Sqft

Approx Lot SqFt: 0 Sqft

✓ Special Listing Conditions: Standard

Virtual Tour URL Unbranded: [Click Here](#)

Agent [Info](#)



Rina Maya
☎ 858-876-7946
☎ 800-878-0907
✉ Questions@unitedbrokersinc.net