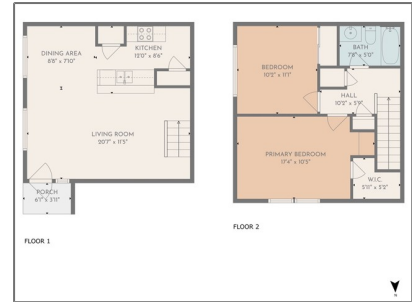


Residential For Sale

836 Sqft - 1086 Calle De Las Estrellas, Azusa,
California, 91702



Basic Details

| | |
|------------------------|-------------|
| Status: | Active |
| Listing Type: | For Sale |
| Property Type: | Residential |
| Property SubType: | Condominium |
| Price: | \$399,000 |
| Price Per Square Foot: | \$477 |
| Square Footage: | 836 Sqft |
| Lot Area: | 0.99 Sqft |
| Year Built: | 1971 |
| View: | Mountain(s) |
| Bedrooms: | 2 |
| Bathrooms: | 1 |
| Bathrooms (Full): | 1 |
| Country: | US |
| State: | California |
| County: | Los Angeles |
| City: | Azusa |
| Zipcode: | 91702 |

Features

| | |
|-----------------------|---|
| ✓ View: | Mountain(s), Golf Course, Peek-a-boo |
| Association: | 1 |
| Senior Community: | 0 |
| ✓ Common Walls: | 2+ Common Walls, End Unit |
| Stories: | 2 |
| ✓ Community Features: | Sidewalks, Street Lights, Suburban, Curbs, Foothills, Gutters |
| ✓ Pool: | In ground, Association |
| ✓ Amenities: | Pool, Spa/hot Tub |
| ✓ Parking: | 0.00 |
| Entry Level: | 1 |
| ✓ Laundry: | See Remarks, In Carport |
| ✓ Room Type: | All Bedrooms Up |
| ✓ Entry Location: | Main Level |
| ✓ Heating System: | Central |
| ✓ Cooling System: | Central Air |

| | | | | |
|-------------|-------------------|---|---------------|--------------|
| Listing ID: | CV23193865 | ✓ | Water Source: | Public |
| | | ✓ | Sewer: | Public Sewer |

MLS [Addon](#)

| | |
|-------------------------------|--------------------------|
| Association Fee Frequency: | Monthly |
| Zoning: | AZR3B* |
| Parcel Number: | 8617005040 |
| Lot Size Square Feet: | 43,078 Sqft |
| TaxAnnualAmount: | \$0 |
| Association Fee: | \$342 |
| High School: | Arlington |
| High School 2: | Arling |
| Middle Or Junior School: | Miller |
| High School District: | Azusa Unified |
| Levels: | Two |
| Taxes: | \$0 |
| Guest House SqFt: | 0 Sqft |
| Approx Lot SqFt: | 0 Sqft |
| ✓ Special Listing Conditions: | Standard |

Agent [Info](#)



Rina Maya
 ☎ 858-876-7946
 ☎ 800-878-0907
 ✉ Questions@unitedbrokersinc.net

