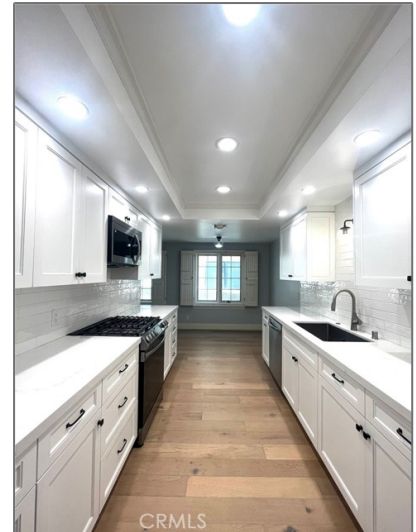


Residential For Sale

1,730 Sqft - 1840 Veteran Avenue, Los Angeles,
California, 90025



Basic Details

Status:	Active
Listing Type:	For Sale
Property Type:	Residential
Property SubType:	Condominium
Price:	\$1,195,000
Price Per Square Foot:	\$691
Square Footage:	1,730 Sqft
Lot Area:	0.54 Sqft
Year Built:	1981
View:	Mountain(s)
Bedrooms:	2
Bathrooms:	3
Bathrooms (Full):	2
Bathrooms (1/2):	1
Country:	US

Features

Association:	1
Senior Community:	0
✓ Common Walls:	1 Common Wall
Stories:	1
✓ Community Features:	Urban
✓ Amenities:	Water
AttachedGarage :	0
✓ Parking:	2.00
✓ Fireplace:	Gas, Living room
Entry Level:	1
✓ Laundry:	Individual Room
✓ Room Type:	Living Room, Kitchen, All Bedrooms Down
✓ Entry Location	
✓ Interior Features:	High Ceilings, Wet Bar,

State:	California
County:	Los Angeles
City:	Los Angeles
Zipcode:	90025
Listing ID:	SR23198290

Living Room Balcony,
Quartz Counters

Main Level Bathrooms:	3
Main Level Bedrooms:	2
✓ Heating System:	Central
✓ Cooling System:	Central Air
✓ Water Source:	Public
✓ Sewer:	Unknown

MLS Addon

Association Fee Frequency:	Monthly
Zoning:	LAR3
Parcel Number:	4323007109
Lot Size Square Feet:	23,689 Sqft
TaxAnnualAmou nt:	\$0
Association Fee 2:	\$389
Association Fee:	\$700
Association Fee 2 Frequency:	Monthly
Garage Spaces:	2
High School:	Arlington
High School 2:	Arling
Middle Or Junior School:	Miller
High School District:	Other
Levels:	One
Taxes:	\$0
Guest House	0 Sqft

SqFt:




Approx Lot SqFt: **0 Sqft**

☒ Special Listing Conditions:

Trust

Agent [Info](#)



Rina Maya
 858-876-7946
 800-878-0907
 Questions@unitedbrokersinc.net

-
