

Manufactured In Park For Sale

1,690 Sqft - 3973 Berwyn Drive, Santa Maria, California, 93455



Basic Details

Status:	Active
Listing Type:	For Sale
Property Type:	Manufactured In Park
Price:	\$363,000
Price Per Square Foot:	\$215
Square Footage:	1,690 Sqft
Lot Area:	0.11 Sqft
Year Built:	1981
View:	Mountain(s)
Bedrooms:	2
Bathrooms:	2
Bathrooms (Full):	2
Country:	US
State:	California

Features

Association:	1
Senior Community:	1
Stories:	1
✓ Pet Policy	
✓ Community Features:	Suburban
Attached Garage :	0
✓ Parking:	2.00
✓ Parking:	Driveway, Garage
✓ Lot Features:	Level With Street
✓ Fence:	Average condition
✓ Security:	Carbon monoxide detector(s), Smoke Detector(s)
✓ Electric:	Photovoltaics Seller Owned

County:	Santa Barbara
City:	Santa Maria
Zipcode:	93455
Listing ID:	PI23163936

Entry Level:	1
✓ Laundry:	Individual Room, Washer Hookup, Gas & Electric Dryer Hookup, Dryer Included, Washer Included
✓ Room Type:	Family Room, Living Room, Kitchen, Laundry, Main Floor Bedroom, Main Floor Primary Bedroom
✓ Roofing:	Shingle
✓ Flooring:	Carpet, Vinyl
✓ Entry Location:	Front
✓ Interior Features:	Ceiling Fan(s)
✓ Heating System:	Forced air
✓ Utilities:	Sewer Connected, Electricity Connected, Natural Gas Connected
✓ Water Source:	Public
✓ Sewer:	Public Sewer
✓ Appliances:	Dishwasher, Disposal, Gas Range, Microwave, Refrigerator, Gas Oven, Range Hood, Vented Exhaust Fan
✓ Accessibility Features:	Parking

MLS [Addon](#)

Association Fee Frequency:	Monthly
Parcel Number:	107870017
Lot Size Square Feet:	5,004 Sqft
TaxAnnualAmount:	\$0
Association Fee:	\$210
✓ RoomBathroomFeat	Shower, Bathtub, Walk-in

ures:

Shower, Exhaust Fan(s),
Double Sinks In Primary
Bath

Garage Spaces: 2

High School: Arlington

High School 2: Arling

Middle Or Junior School: Miller

High School District: Santa Maria-Bonita

Levels: One

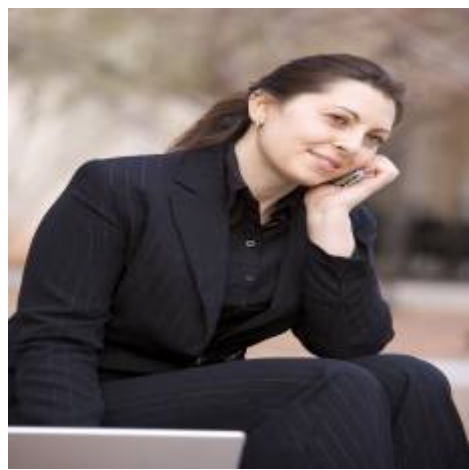
Taxes: \$0

Guest House SqFt: 0 Sqft

Approx Lot SqFt: 0 Sqft

✓ Special Listing Conditions: Standard

Agent Info



Rina Maya
☎ 858-876-7946
☎ 800-878-0907
✉ Questions@unitedbrokersinc.net

-