

Manufactured In Park For Sale

880 Sqft - 56254 29 Palms Highway, Yucca Valley, California, 92284



Basic Details

Status: **Active**

Listing Type: **For Sale**

Property Type: **Manufactured In Park**

Price: **\$55,000**

Price Per Square Foot: **\$63**

Square Footage: **880 Sqft**

Year Built: **1970**

View: **Mountain(s)**

Bedrooms: **2**

Bathrooms: **1**

Bathrooms (Full): **1**

Country: **US**

State: **California**

County: **San Bernardino**

City: **Yucca Valley**

Zipcode: **92284**

Listing ID: **JT23054525**

Features

Association: **0**

Senior Community: **1**

✓ Pet Policy: **Call**

✓ Community Features: **Rural**

✓ Pool: **Community**

Attached Garage: **0**

✓ Parking: **2.00**

✓ Lot Features: **Level**

✓ Patio: **Front Porch**

✓ Laundry: **Inside**

✓ Flooring: **Wood, Carpet, Vinyl**

✓ Heating System: **Forced air**

✓ Cooling System: **Central Air**

✓ Water Source: **Public**

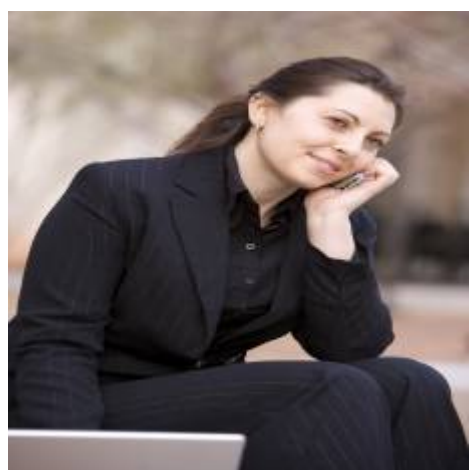
✓ Sewer: **Public Sewer**

✓ Appliances: **Gas Oven**

MLS [Addon](#)

Parcel Number:	0585013260027
TaxAnnualAmount:	\$0
Garage Spaces:	1
High School:	Arlington
High School 2:	Arling
Middle Or Junior School:	Miller
High School District:	Morongo Unified
Levels:	One
Taxes:	\$0
Guest House SqFt:	0 Sqft
Approx Lot SqFt:	0 Sqft
<div><div>✓</div><div>Special Listing Conditions:</div></div>	<div>Standard</div>

Agent [Info](#)



Rina Maya
☎ 858-876-7946
☎ 800-878-0907
✉ Questions@unitedbrokersinc.net