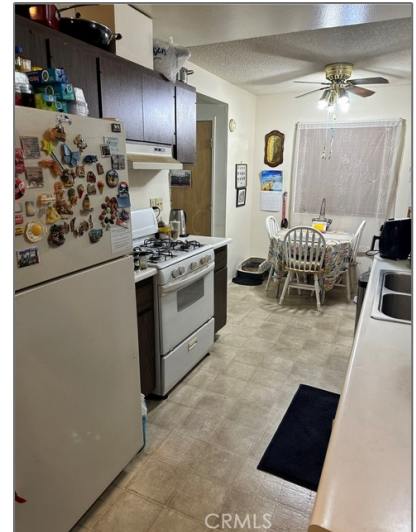


Residential For Sale

827 Sqft - 573 San Rogelio Street, Hemet, California, 92545



Basic Details

Status:	Active
Listing Type:	For Sale
Property Type:	Residential
Property SubType:	Single Family Residence
Price:	\$224,900
Price Per Square Foot:	\$272
Square Footage:	827 Sqft
Lot Area:	0.10 Sqft
Year Built:	1975
View:	Mountain(s)
Bedrooms:	2
Bathrooms:	1
Bathrooms (Full):	1
Country:	US
State:	California

Features

✓ View:	Neighborhood
Association:	1
Senior Community:	1
✓ Common Walls:	1 Common Wall
Stories:	1
✓ Community Features:	Curbs
✓ Amenities:	Management
AttachedGarage :	1
✓ Parking	
✓ Parking:	Driveway, Garage - Single Door, Garage, Driveway Level, Garage Faces Front
Spa:	0
✓ Lot Features:	Front Yard, Lawn
✓ Fence:	Wood

County:	Riverside
City:	Hemet
Zipcode:	92545
Listing ID:	SW23171778

✓	Security:	Carbon monoxide detector(s), Smoke Detector(s)
---	-----------	--

✓	Patio:	Patio
---	--------	-------

Entry Level:	1
--------------	----------

✓	Laundry:	In Kitchen
---	----------	------------

✓	Room Type:	Living Room, Kitchen, Main Floor Bedroom, All Bedrooms Down
---	------------	---

✓	Roofing:	Composition, Asphalt
---	----------	----------------------

✓	Flooring:	Carpet, Vinyl
---	-----------	---------------

✓	Entry Location	
---	----------------	--

✓	Foundation Details:	Slab
---	---------------------	------

✓	Interior Features:	Formica Counters
---	--------------------	------------------

Main Level Bathrooms:	1
-----------------------	----------

Main Level Bedrooms:	2
----------------------	----------

✓	Heating System:	Central
---	-----------------	---------

✓	Cooling System:	Central Air
---	-----------------	-------------

✓	Utilities:	Sewer Connected, Water Connected, Cable Available, Electricity Connected, Natural Gas Connected, Phone Available
---	------------	--

✓	Water Source:	Public
---	---------------	--------

✓	Sewer:	Public Sewer
---	--------	--------------

✓	Appliances:	Gas Range, Gas Oven
---	-------------	---------------------

MLS [Addon](#)

Association Fee Frequency:	Annually
Zoning:	R2
Parcel Number:	448354001

Lot Size Square Feet:	4,356 Sqft
TaxAnnualAmount:	\$0
Association Fee:	\$80
<div>✓</div> RoomKitchenFeatures:	Formica Counters
<div>✓</div> RoomBathroomFeatures:	Bathtub, Shower In Tub
Garage Spaces:	1
High School:	Arlington
High School 2:	Arling
Middle Or Junior School:	Miller
High School District:	Hemet Unified
Levels:	One
<div>✓</div> EatingArea:	Family Kitchen
Taxes:	\$0
Guest House SqFt:	0 Sqft
Approx Lot SqFt:	0 Sqft
<div>✓</div> Special Listing Conditions:	Standard

Agent [Info](#)



Rina Maya
☎ 858-876-7946
☎ 800-878-0907
✉ Questions@unitedbrokersinc.net
