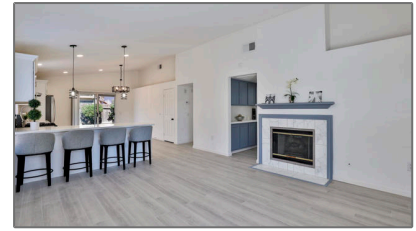
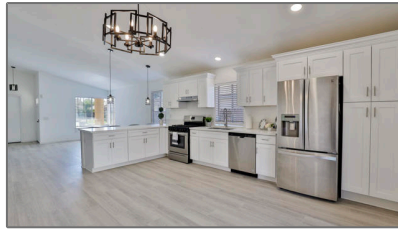


# Residential For Sale

1,143 Sqft - 2250 Carnation Avenue, Hemet,  
California, 92545



## Basic Details

Status:	Active
Listing Type:	For Sale
Property Type:	Residential
Property SubType:	Single Family Residence
Price:	\$419,900
Price Per Square Foot:	\$367
Square Footage:	1,143 Sqft
Lot Area:	0.09 Sqft
Year Built:	1989
View:	Mountain(s)
Bedrooms:	2
Bathrooms:	2
Bathrooms (Full):	2
Country:	US
State:	California
County:	Riverside
City:	Hemet
Zipcode:	92545
Listing ID:	219101899DA

## Features

Association:	0
Senior Community:	0
Stories:	1
AttachedGarage :	1
✓ Parking:	6.00
✓ Parking:	Driveway, Garage Door Opener, Street
Spa:	0
✓ Fireplace:	Living room, Gas starter, Masonry
✓ Patio:	Covered
✓ Inclusions:	Dishwasher, The Owner Is Open To Considering The Inclusion Of Some Furniture In The Sale. Call To Discuss.
✓ Laundry:	In Closet
✓ Room Type:	Living Room, Two Primaries
✓ Roofing:	Tile
✓ Flooring:	Laminate
✓ Window Features:	Screens, Blinds

✓	Property Condition:	Updated/remodeled
✓	Interior Features:	High Ceilings, Open Floorplan, Recessed Lighting
✓	Heating System:	Forced air, natural gas
✓	Cooling System:	Central Air
✓	Appliances:	Dishwasher, Gas Water Heater, Refrigerator, Gas Oven, Gas Cooking

MLS [Addon](#)

Parcel Number:	456265013
Lot Size Square Feet:	3,920 Sqft
✓ Exclusions:	Waher & Dryer
TaxAnnualAmount:	\$0
✓ RoomKitchenFeatures:	Kitchen Island, Quartz Counters, Remodeled Kitchen
✓ RoomBathroomFeatures:	Remodeled
Garage Spaces:	2
High School:	West Valley
High School 2:	Wesval
Middle Or Junior School:	Diamond Valley
High School District:	Hemet Unified
Levels:	One
✓ EatingArea:	Breakfast Counter / Bar, Breakfast Nook
Taxes:	\$0
Guest House SqFt:	0 Sqft
Approx Lot SqFt:	0 Sqft
✓ Special Listing	

Conditions:

Standard

Agent [Info](#)

---



Rina Maya  
☎ 858-876-7946  
☎ 800-878-0907  
✉ [Questions@unitedbrokersinc.net](mailto:Questions@unitedbrokersinc.net)

-

---