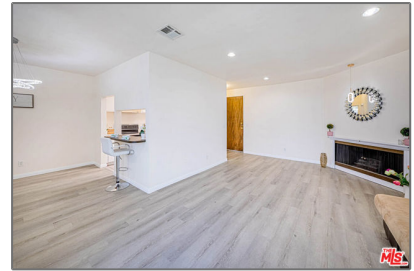


Residential For Sale

886 Sqft - 400 La Fayette ParkPlace, Los Angeles,
California, 90057



Basic Details

Status:	Active
Listing Type:	For Sale
Property Type:	Residential
Property SubType:	Condominium
Price:	\$460,000
Price Per Square Foot:	\$519
Square Footage:	886 Sqft
Lot Area:	0.65 Sqft
Year Built:	1970
View:	Mountain(s)
Bedrooms:	1
Bathrooms:	2
Bathrooms (Full):	2
Country:	US
State:	California
County:	Los Angeles
City:	Los Angeles
Zipcode:	90057
Listing ID:	23312779

Features

Association:	1
Senior Community:	0
Stories:	3
✓ Pool:	In ground, Association, Community
✓ Amenities:	Pool
✓ Parking:	2.00
✓ Parking:	Garage - Two Door, Tandem Garage
✓ Fireplace:	Living room
✓ Security:	Fire and smoke detection system, Gated community, Card/code access, Resident manager, Carbon monoxide detector(s), Smoke Detector(s)
Entry Level:	3
✓ Laundry:	Community
✓ Room Type:	Living Room, Walk-in Closet, Primary Bathroom
✓ Flooring:	Vinyl
✓ Property Condition:	Updated/remodeled

✓	Heating System:	Central
✓	Cooling System:	Central Air
✓	Appliances:	Disposal

MLS [Addon](#)

Association Fee Frequency:	Monthly
Zoning:	LAR4
Parcel Number:	5155018055
Lot Size Square Feet:	28,375 Sqft
TaxAnnualAmount:	\$0
Association Fee:	\$300
High School:	Arlington
High School 2:	Arling
Middle Or Junior School:	Miller
Levels:	One
Taxes:	\$0
Guest House SqFt:	0 Sqft
Approx Lot SqFt:	0 Sqft
✓ Special Listing Conditions:	Standard

Agent [Info](#)



Rina Maya
 ☎ 858-876-7946
 ☎ 800-878-0907
 ✉ Questions@unitedbrokersinc.net

