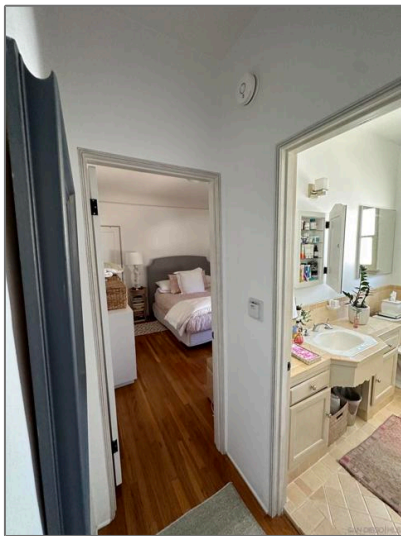


# Commercial For Sale

- 416 Bedford, Beverly Hills, California, 90212



## Basic [Details](#)

Status:	Active
Listing Type:	For Sale
Property Type:	Commercial
Property SubType:	Commercial/residential
Price:	\$3,500,000
View:	Mountain(s)
Country:	US
State:	California
County:	Los Angeles
City:	Beverly Hills
Zipcode:	90212
Listing ID:	230021199SD

## MLS [Addon](#)

Parcel Number:	4330015006
TaxAnnualAmount:	\$0

## Features



Parking:

0.00

TaxYear:	0
Taxes:	\$0
Guest House SqFt:	0 Sqft
Approx Lot SqFt:	0 Sqft

Agent [Info](#)

---



Rina Maya  
☎ 858-876-7946  
☎ 800-878-0907  
✉ [Questions@unitedbrokersinc.net](mailto:Questions@unitedbrokersinc.net)

---